



## REVIEW ARTICLE

# Dietary polyphenols as antidiabetic agents: Advances and opportunities

Chongde Sun<sup>1</sup> | Chao Zhao<sup>2,3</sup> | Esra Capanoglu Guven<sup>4</sup> | Paolo Paoli<sup>5</sup> |  
 Jesus Simal-Gandara<sup>6</sup>  | Kunka Mohanram Ramkumar<sup>7,8</sup> | Shengpeng Wang<sup>3</sup> |  
 Florina Buleu<sup>9</sup> | Ana Pah<sup>9</sup> | Vladiana Turi<sup>9</sup> | Georgiana Damian<sup>9</sup> | Simona Dragan<sup>9</sup> |  
 Merve Tomas<sup>10</sup> | Washim Khan<sup>11</sup> | Mingfu Wang<sup>12</sup> | Dominique Delmas<sup>13,14,15</sup> |  
 Maria Puy Portillo<sup>16,17</sup> | Parsa Dar<sup>3</sup> | Lei Chen<sup>2</sup> | Jianbo Xiao<sup>3</sup> 

<sup>1</sup>Zhejiang Provincial Key Laboratory of Horticultural Plant Integrative Biology, Zhejiang University, Hangzhou, China

<sup>2</sup>College of Food Science, Fujian Agriculture and Forestry University, Fuzhou, China

<sup>3</sup>State Key Laboratory of Quality Research in Chinese Medicine, Institute of Chinese Medical Sciences, University of Macau, Macau, China

<sup>4</sup>Department of Food Engineering, Faculty of Chemical and Metallurgical Engineering, İstanbul Technical University, İstanbul, Turkey

<sup>5</sup>Department of Biomedical, Experimental, and Clinical Sciences, University of Florence, Florence, Italy

<sup>6</sup>Nutrition and Bromatology Group, Department of Analytical Chemistry and Food Science, Faculty of Food Science and Technology, University of Vigo - Ourense Campus, Ourense, Spain

<sup>7</sup>Life Science Division, SRM Research Institute, SRM University, Kattankulathur, India

<sup>8</sup>Department of Biotechnology, School of Bio-engineering, SRM University, Kattankulathur, India

<sup>9</sup>Centre for Interdisciplinary Research & Department of Cardiology, University of Medicine and Pharmacy Victor Babes, Timisoara, Romania

<sup>10</sup>Faculty of Engineering and Natural Sciences, Food Engineering Department, İstanbul Sabahattin Zaim University, İstanbul, Turkey

<sup>11</sup>National Center for Natural Products Research, School of Pharmacy, The University of Mississippi, University, Mississippi

<sup>12</sup>School of Biological Sciences, The University of Hong Kong, Pokfulam, Hong Kong

<sup>13</sup>INSERM U866 Research Center, Université de Bourgogne Franche-Comté, Dijon, France

<sup>14</sup>INSERM Research Center U1231 – Cancer and Adaptive Immune Response Team, Bioactive Molecules and Health Research Group, Dijon, France

<sup>15</sup>Centre Anticancéreux Georges François Leclerc Center, Dijon, France

<sup>16</sup>Nutrition and Obesity Group, Department of Nutrition and Food Science, Faculty of Pharmacy and Lucio Lascaray Research Institute, University of País Vasco (UPV/EHU), Vitoria-Gasteiz, Spain

<sup>17</sup>CIBEROBN Physiopathology of Obesity and Nutrition, Institute of Health Carlos III (ISCIII), Vitoria-Gasteiz, Spain

**Correspondence**

Jianbo Xiao, Institute of Chinese Medical Sciences, State Key Laboratory of Quality Research in Chinese Medicine, University of Macau, Macau, China.

Email: jianboxiao@yahoo.com

Lei Chen, College of Food Science, Fujian Agriculture and Forestry University, Fuzhou 350002, China.

Email: chenlei841114@hotmail.com

**Funding information**

Multi-Year Research Grant of University of Macau, Grant/Award Number: MYRG2018-00169-ICMS

**Abstract**

Dietary polyphenols have been widely investigated as antidiabetic agents in cell, animals, human study, and clinical trial. The number of publication (Indexed by Web of Science) on “polyphenols and diabetes” significantly increased since 2010. This review highlights the advances and opportunities of dietary polyphenols as antidiabetic agents. Dietary polyphenols prevent and manage Type 2 diabetes mellitus via the insulin-dependent approaches, for instance, protection of pancreatic islet  $\beta$ -cell, reduction of  $\beta$ -cell apoptosis, promotion of  $\beta$ -cell proliferation, attenuation of oxidative stress, activation of insulin signaling, and stimulation of pancreas to secrete insulin, as well as the

This is an open access article under the terms of the Creative Commons Attribution-NonCommercial-NoDerivs License, which permits use and distribution in any medium, provided the original work is properly cited, the use is non-commercial and no modifications or adaptations are made.

© 2020 The Authors. *Food Frontiers* published by John Wiley & Sons Australia, Ltd and Nanchang University, Northwest University, Jiangsu University, Zhejiang University, Fujian Agriculture and Forestry University

insulin-independent approaches including inhibition of glucose absorption, inhibition of digestive enzymes, regulation of intestinal microbiota, modification of inflammation response, and inhibition of the formation of advanced glycation end products. Moreover, dietary polyphenols ameliorate diabetic complications, such as vascular dysfunction, nephropathy, retinopathy, neuropathy, cardiomyopathy, coronary diseases, renal failure, and so on. The structure–activity relationship of polyphenols as antidiabetic agents is still not clear. The individual flavonoid or isoflavone has no therapeutic effect on diabetic patients, although the clinical data are very limited. Resveratrol, curcumin, and anthocyanins showed antidiabetic activity in human study. How hyperglycemia influences the bioavailability and bioactivity of dietary polyphenols is not well understood. An understanding of how diabetes alters the bioavailability and bioactivity of dietary polyphenols will lead to an improvement in their benefits and clinical outcomes.

#### KEYWORDS

bioavailability, clinical study, diabetes, diabetic complication, dietary polyphenols, glucose absorption, intestinal microbiota, pancreatic islet  $\beta$ -cell

## 1 | NATURAL PRODUCTS BASED ANTIDIABETIC DRUG DISCOVERY

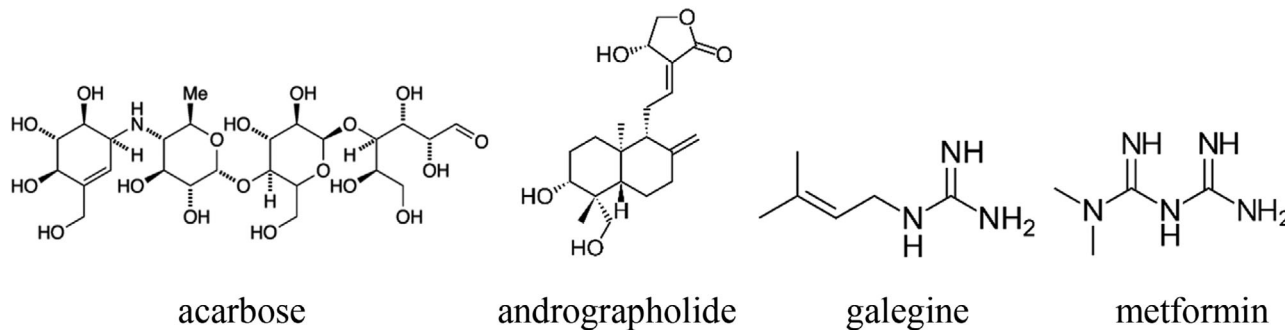
Historically, natural products have been playing an important role in human health. Plants have been traditionally used to combat diseases in the medical traditions of different societies. Therefore, not surprisingly many modern drugs represent plant-derived substances for treating Type 2 diabetes (T2D) mellitus, with multiple prominent examples, such as acarbose, andrographolide, and galegine, which contributed to the discovery of biguanides (Figure 1).

With so many successful records, the advantages of natural products-based drug discovery highlight biodiversity of resources, structural and chemical diversity, drug-likeness and biological friendliness, biocompatibility and biological validation, hints on efficacy and safety from application of traditional medicines, opportunities for use as scaffolds for chemical modifications to optimize potency, multi-targeted mechanism of action for diseases of complex etiology, and available to large-scale production by biotechnological approaches.

Biodiversity of resources of natural products from rich ecosystems includes plants, fungi, bacteria, algae, animals, minerals, and their metabolites, which provide a unique and renewable resource for the discovering of potential new polyphenols with novel bioactivities (Hoffmann et al., 2018). One key advantage of natural products is their enormous structural diversity; they typically have higher molecular weights, more  $sp^3$  carbon atoms, and less nitrogen and halogen elements; a greater number of chiral centers increased steric complexity and greater molecular rigidity than either synthetic drugs or combinatorial libraries (Li & Vederas, 2009). The significance of natural products chemistry is the introduction of novel molecular skeletons and functionalities, which may change their bioavailability and

bio-efficacy. Moreover, natural polyphenols produced by living organisms are evolutionarily optimized as drug-likeness and biological friendliness than totally synthetic chemicals. Application of biotechnology including transgenic plants, microbial fermentation, and enzyme engineering enables the large-scale production of specific natural bioactive polyphenols (Atanasov et al., 2015; Cao, Chen, Jassbi, & Xiao, 2015; Xiao, Muzashvili, & Georgiev, 2014).

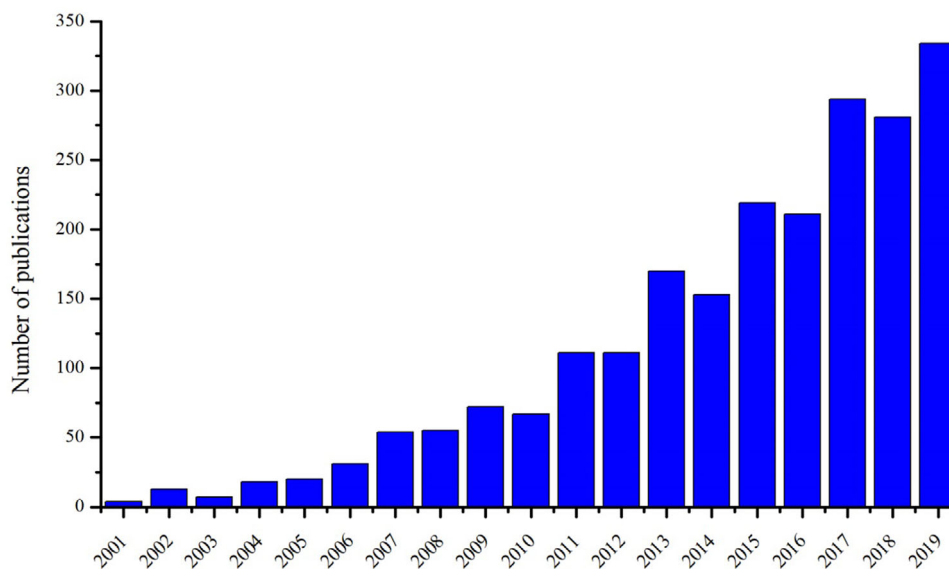
The medicinal herbs usually contain multiple bioactive compounds including with multiple targets diabetic therapy. In traditional Chinese medicine, purslane, Fenugreek seeds, and mulberry leaves were widely applied to treat diabetes (Figure 2). Fenugreek seeds contained soluble dietary fibers (galactomannan), diosgenin, trigonelline, flavone C-glycosides, and other ingredients that showed hypoglycemic activity. Galactomannan can delay gastric emptying of carbohydrates, inhibit digestive enzymes, and regulate intestinal flora (Zentek et al., 2013). Diosgenin protects pancreatic islet  $\beta$ -cells and upregulates hepatic glucose kinase (Fuller & Stephen, 2015). Trigonelline improves insulin signaling pathway (Aldakinah, Al-Shorbagy, Abdallah, & El-Abhar, 2017), attenuates the endoplasmic reticulum stress and oxidative stress in type 2 diabetic rats (Mayakrishnan et al., 2015), and affects the regeneration of pancreatic islet  $\beta$ -cells, the secretion of insulin, and glucose metabolizing enzymes (Zhou, Chan, & Zhou, 2012). Flavone C-glycosides can inhibit digestive enzymes, activate insulin signaling, and reduce the formation of advanced glycation end products (Xiao, Capanoglu, Jassbi, & Miron, 2016). Dietary polyphenols have been widely investigated as antidiabetic agents in cell, animals, human study, and clinical trial. The number of publication (Indexed by Web of Science) on “polyphenols and diabetes” significantly increased since 2010 (Figure 3). This review will focus on the advances and opportunities of dietary polyphenols as antidiabetic agents.



**FIGURE 1** Natural antidiabetic drugs



**FIGURE 2** Purslane, fenugreek seeds, and mulberry leaves were applied to treat diabetes in Traditional Chinese Medicine

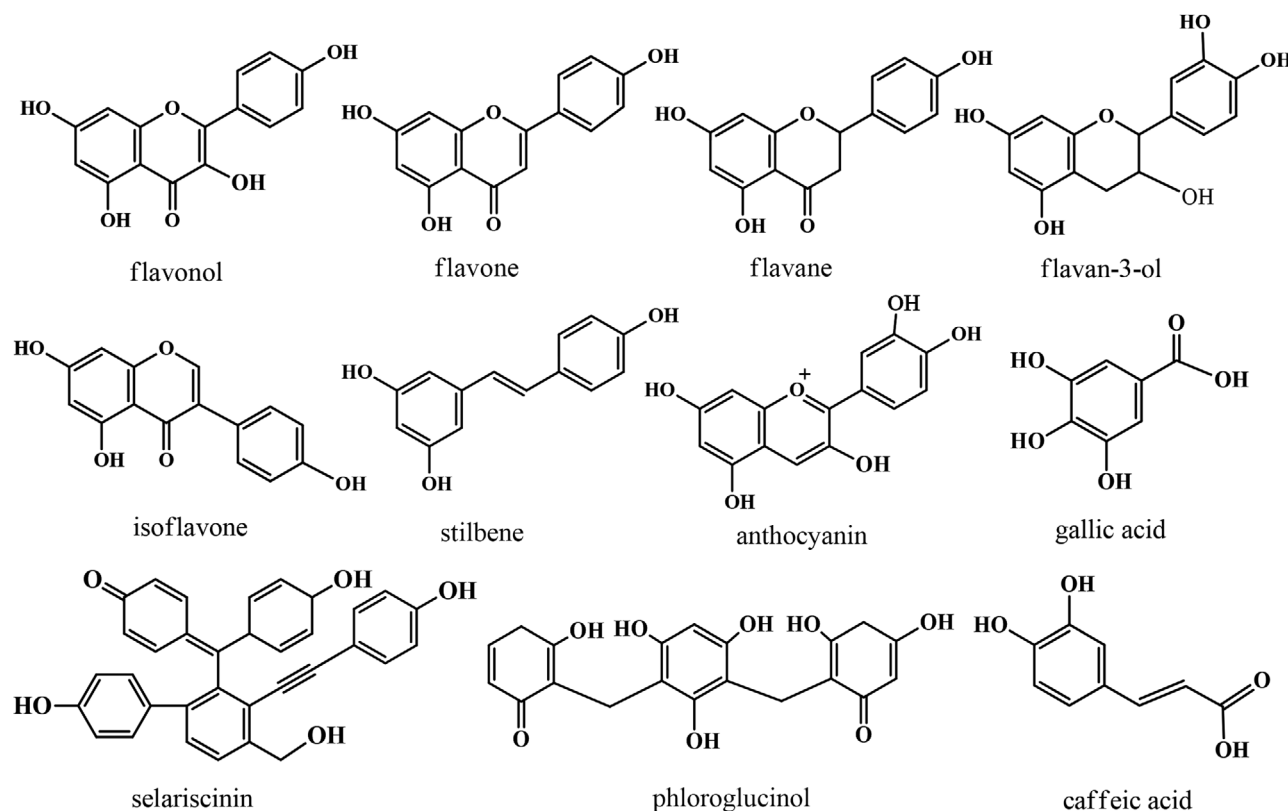


**FIGURE 3** Increasing publications on "polyphenols and diabetes" since 2010 (Indexed by Web of Science)

## 2 | DIETARY POLYPHENOLS

Phenolics are the intricate category of bioactive molecules produced by shikimate and acetate pathways that occur naturally. Almost all medicinal and edible plants contain phenolic compounds. Among the richest dietary sources of phenolic and polyphenolic compounds are fruits, spices, seeds, and vegetables. Moreover, certain beverages like

tea, coffee, and wine contribute significantly to the daily intake of phenolics (Pérez-Jiménez, Neveu, Vos, & Scalbert, 2010). Due to their structural diversity and possessing therapeutic activities, researchers have focused on phenolic compounds exploring their use as medicinal agents. Compounds with one phenolic ring are generally classified as simple phenols, whereas those with more than one phenolic ring referred to as polyphenols (Figure 4). There are four major groups



**FIGURE 4** Chemical structures of natural polyphenols

of phenolic compounds: simple phenols (designated as phenolic acid), lignans, stilbenes, and polyphenols (referred to as flavonoids). Among polyphenols, flavonoids represent the wide-ranging metabolites, which include flavonols, flavones, flavanones, isoflavones, and anthocyanins (Figure 3).

Phenolic acids are the aromatic carboxylic acid with hydroxyl derivatives that have only one phenolic ring in their structure and are of two types, for example, hydroxybenzoic acid and hydroxycinnamic acid derivatives (Kondratyuk & Pezzuto, 2004). Caffeic, *p*-coumaric, ferulic, and sinapic acids are the hydroxycinnamic acid derivatives that are more abundant in plant as compared to benzoic acid derivatives such as gallic acid, protocatechuic acid, and *p*-hydroxybenzoic acid.

With 1,2-diphenylethylene nucleus, stilbenes consist of two phenolic rings connected by a methylene bridge (Rivière, Pawlus, & Mérillon, 2012). Stilbenes are not found abundantly in plants, and thus our diet always deficit with it. Resveratrol (3,4',5-trihydroxy stilbene), a well-known stilbenes class of polyphenol, found mainly in grapes skin, mulberries, peanuts, and red wine (Burns, Yokota, Ashihara, Lean, & Crozier, 2002). Anthocyanidins are present in red wine, cereals, and certain vegetables (e.g., beans, cabbage, and onions), but the primary source of these polyphenols is red fruits (Lee, Durst, & Wrolstad, 2005). Cyanidine, delphinidine, malvidin, petunidine, pelargonidine, and peonidine are the common anthocyanidin aglycones in the human diet (Kähkönen & Heinonen, 2003).

The most common group of polyphenols in the human diet are flavonoids. It contains two phenolic rings, which are connected by three

carbon atoms of an oxygen-containing heterocyclic ring. Flavonols, flavones, flavanones, isoflavones, flavan-3-ols, and anthocyanidins are the different types of flavonoids found in the plant-based human diet. Flavonoids with 3-hydroxy pyran-4-one group on the C-ring known as flavonols are prevalent in human diet, especially in tea, fruits, and vegetables (Xiao, 2017). The dietary flavonoids in nature almost all exist as their glycosides, such as glucoside, galactoside, rhamnoside, arabinoside, and rutinoside. The most abundant flavonoid glycosides in plants are flavone O/C-glycosides and flavonol O-glycosides. The flavonoid O-glycosides are found mainly as their 3- or 7-O-glycosides (Xiao, 2017); however, most flavonoid C-glycosides are in 6- and 8-C-glycosidic forms (Xiao et al., 2016).

Caffeoylquinic acids are members of a larger family of chlorogenic acids. The subfamily of caffeoylquinic acids includes several isomers of which the most famous are 3-O-caffeoylquinic acid, crypto-chlorogenic acid, chlorogenic acid, 1,5-di-O-caffeoylquinic acid, 3,4-di-O-caffeoylquinic acid, 3,5-di-O-caffeoylquinic acid, and 4,5-di-O-caffeoylquinic acid. Plants use caffeoylquinic acids as precursors to sustain the lignin biosynthesis, to defend plants from the attack of pathogens (bacteria and fungi), or as protecting agents against damages induced by oxidative stress and UV rays (Clifford, Jaganath, Ludwig, & Crozier, 2017). Depending on the plant species, the amount of caffeoylquinic acids produced changes, varying from micrograms to grams per kilogram of dry weight. Due to their chemical structure, caffeoylquinic acids show a good solubility in water and can easily be extracted from natural sources (Clifford, 2000; Meinhart et al., 2017).

Proanthocyanidins are a class of polyphenols found in a variety of plants. Chemically, they are oligomeric flavonoids. Many are oligomers of catechin and epicatechin and their gallic acid esters. More complex polyphenols, having the same polymeric building block, form the group of tannins. Anthocyanidins are a class of water-soluble pigments that are widely found in plant tissues such as flowers, leaves, fruits, and stems. Structurally, anthocyanidins are phenolic compounds belonging to the flavonoids, usually in the form of glycosides, composed of aglycones and glycosyl groups. More than 600 anthocyanidins have been reported, of which six anthocyanins (aglycones) including cyanidin, malvidin, delphinidin, petunidin, peonidin, and pelargonidin accounted for 95% of them. Anthocyanidins differ in the number and position of hydroxyl groups on the ring, the degree of methylation of the hydroxyl groups, and the number and location of glycosyl ligands.

### 3 | EVIDENCE FROM THE EPIDEMIOLOGICAL INVESTIGATION

Significant evidence from epidemiological investigations has shown that dietary polyphenols might control and prevent T2D while contrary opinions also exist. A high intake of total polyphenols, total flavonoids (specifically flavanones and dihydroflavonols), and stilbenoids is associated with a reduced risk of diabetes in elderly persons at high risk of cardiovascular disease in the Prevencion con Dieta Mediterranea trial (Tresserra-Rimbau et al., 2016). Dietary flavonoids were regarded as a related factor of reduced risk of T2D (Liu, Li, Zhang, Sun, & Xia, 2014), for example, van Dam, Naidoo, and Landberg (2013) highlighted that anthocyanidins and flavan-3-ols could reduce the risk of T2D and a 20-year investigation conducted in the United States received similar effects through higher consumption of anthocyanins or anthocyanin-rich food. Intake of dietary flavones has benefits in prevalence of T2D in Korean women aged  $\geq 30$  years (Oh et al., 2017). Furthermore, a study involving 4,186 Korean individuals even illustrated that the consumption of flavones and flavonols was inversely associated with insulin resistance among male subjects (Wedick et al., 2015). Quercetin intake was inversely related to the prevalence of T2D in the Chinese population investigated by a validated 100-item food frequency questionnaire (Yao et al., 2019). However, this study is not convinced because the effects of co-existed other flavonoids are not considered. Flavonoid intake from fruit and vegetables during adolescence is linked with a favorable risk factor profile for T2D in early adulthood (Penczynski et al., 2019). Contradictory results, however, indicated that uptake of flavonoids might not link to a lower risk of T2D. A prospective cross-sectional study conducted on 38,018 women suggested that there was no relationship between flavonols or flavones consumption and the risk of T2D (Song, Manson, Buring, Sesso, & Liu, 2005). In addition, the intake of anthocyanidins was not linked with the risk of diabetes in women in Iowa (Nettleton et al., 2006). In summary, the results from different epidemiological studies are inconsistent, which may be due to the large variation between different populations and measurement errors in dietary intake (Talaie & Pan, 2015).

## 4 | MECHANISMS OF DIETARY POLYPHENOLS AS ANTIDIABETIC AGENTS

Accumulated evidences from in vivo and in vitro investigations suggest a significant function of dietary polyphenols in the prevention and management of T2D through the insulin dependent approaches, for instance, protection of pancreatic islet  $\beta$ -cell, reduction of  $\beta$ -cell apoptosis, promotion of  $\beta$ -cell proliferation, attenuation of oxidative stress, activation of insulin signaling, and stimulation of pancreas to secrete insulin, as well as the insulin independent approaches including inhibition of glucose absorption, inhibition of digestive enzymes, regulation of intestinal microbiota, modification of inflammation response, and inhibition of the formation of advanced glycation end products (Table 1). Moreover, dietary polyphenols ameliorates diabetic complications, such as vascular dysfunction, nephropathy, retinopathy, neuropathy, cardiomyopathy, coronary diseases, renal failure, and so on (Figure 5).

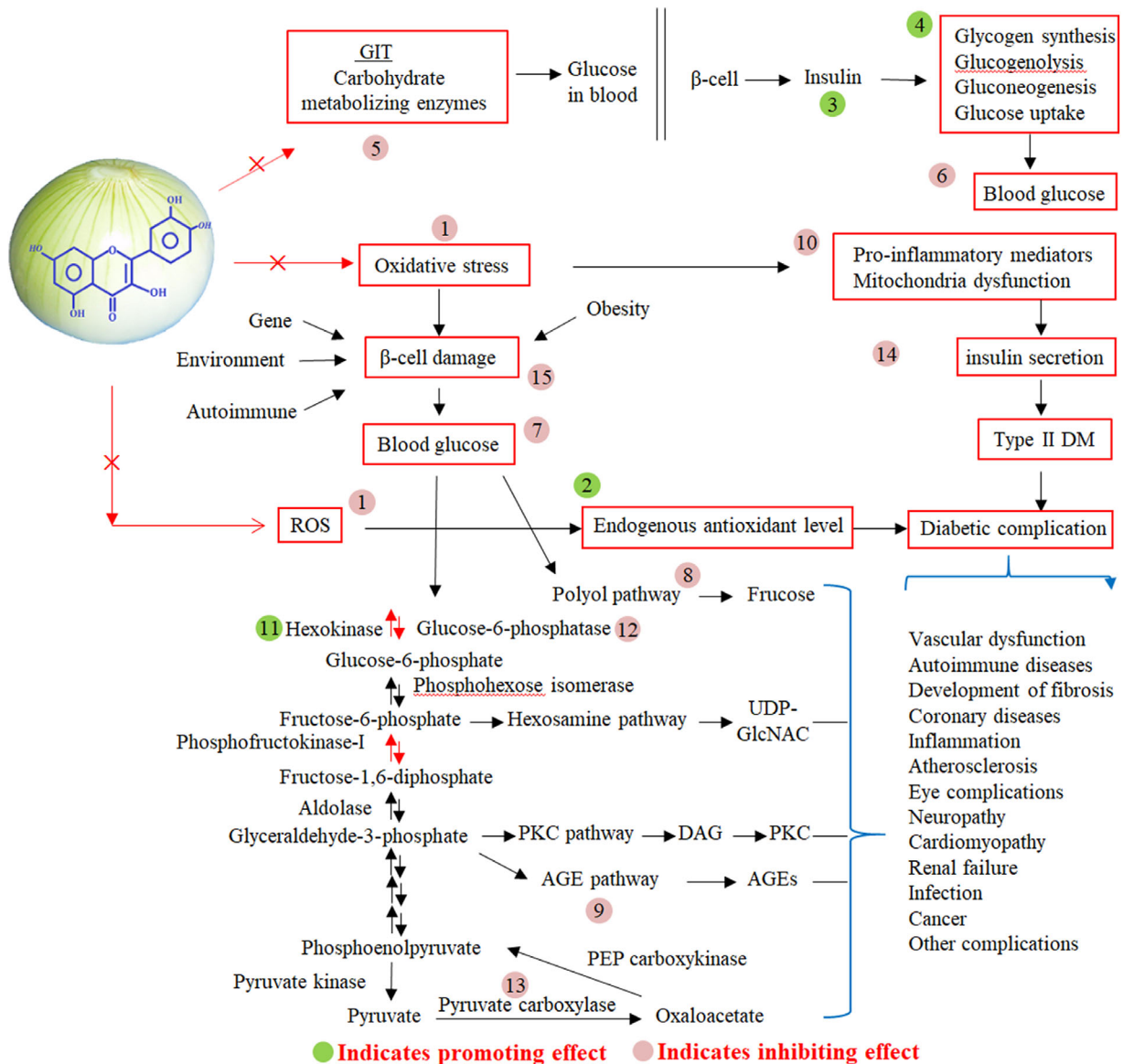
### 4.1 | Flavonoids

Flavonoids and extracts rich in flavonoids from coffee, guava tea, whortleberry, olive oil, propolis, chocolate, and cocoa have been widely studied as possible antidiabetic agents. Quercetin was the most widely investigated flavonoid in the literatures for the in vivo and cellular antidiabetic effects in animal and cell models (Shi et al., 2019), followed by kaempferol (Alkhalidy et al., 2018), luteolin (Sangeetha, 2019), myricetin (Li et al., 2017), and naringenin (Den Hartogh & Tsiani, 2019). Compared with these aglycones, flavonoid O-glycosides shown less antidiabetic potential (Xiao, 2017). However, flavonoid C-glycosides, such as vitexin, isovitexin, swertisin, apigenin 6-C- $\beta$ -fucopyranoside, and apigenin 6-C-(2''-O- $\alpha$ -rhamnopyranosyl)- $\beta$ -fucopyranoside, exhibited positive antidiabetic activity in hyperglycemic animals (Xiao et al., 2016).

Dietary flavonoids showed significant hypoglycemic effect via regulation of glucose absorption (Loureiro & Martel, 2019), inhibition of digestive enzymes (Xiao, Ni, Kai, & Chen, 2013; Xiao, Kai, Yamamoto, & Chen, 2013), regulation of intestinal microbiota (Gowd, Karim, Shishir, Xie, & Chen, 2019), inhibition of advanced glycation end products formation (Xie a& Chen, 2013), and so on. Flavonoids improve the pathogenesis of diabetes and its complications through the regulation of glucose metabolism, hepatic enzymes activities, and a lipid profile (Al-Ishaq, Abotaleb, Kubatka, Kajo, & Büsselberg, 2019; Zhao et al., 2019). The hydroxyl groups attached to ring B and ring C and an unsaturated 2,3-bond in conjugation with a 4-carbonyl group of flavonoids are in favor of the inhibition of digestive enzymes and advanced glycation end products formation, whereas methyl and glycosidic moieties make against the inhibition (Xiao, Ni, et al., 2013; Xiao, Kai, et al., 2013; Xie & Chen, 2013). However, the structure-activity relationship of hypoglycemic effects of dietary flavonoids in animals was not clear. The antidiabetic activity of flavonoid C-glycosides in human and clinical study has been rarely reported.

**TABLE 1** Antidiabetic effects of dietary phenolic compounds

| Phenolic compounds               | Foods  | Promoting effect   | Inhibiting effect  | Refs.   |
|----------------------------------|--|--|--|---|
| Flavonoids                       | Coffee, guava tea, whortleberry, olive oil, propolis, chocolate, and cocoa                                   | Intestinal microbiota  | Glucose absorption; digestive enzymes; inhibition of advanced glycation end products (AGEs) products formation   | Loureiro & Martel, 2019; Xiao, Ni, Kai, & Chen, 2013; Xiao, Kai, Yamamoto, & Chen 2013; Gowd et al., 2019; Xie & Chen, 2013   |
| Isoflavones                      | Soybean  | Hypoglycemic effects via improving insulin resistance and sensitivity, protecting pancreatic $\beta$ -cells; exerting anti-inflammation activity                                       | Carbohydrate digestion and glucose uptake in small intestine; the process of renal interstitial fibrosis in diabetic nephropathic rats; oxidative stress; Maillard reaction and AGEs formation         | Jin et al., 2018; Liu et al., 2018; Chen et al., 2018; Chen et al., 2018  |
| Catechins                        | Tea leaves and red wine  | Insulin sensitivity; AMPK activation; fecal excretion of bile acids and cholesterol  | Glycaemia; blood lipid; white fat depots; pancreatic $\alpha$ -glucosidase, and also $\alpha$ -amylase and maltase; Na <sup>+</sup> -dependent glucose transporter; reactive oxygen species production | Thielecke & Boschmann, 2009; Park et al., 2014; Xu et al., 2019; Kobayashi et al., 2000; Li et al., 2018; Matsui et al., 2007; Shimizu et al., 2000; Solinas & Becattini, 2016; Li et al., 2018 |
| Hydroxycinnamic acids            | Fruits and vegetables, especially the outer part of ripe fruits  | Glucose intolerance and insulin resistance; glucokinase activity; $\beta$ -cell function; activating AMP-activated protein kinase; antioxidant potential and anti-inflammation effects | Glucose-6-phosphatase and phosphoenolpyruvate carboxykinase activities in liver; adipogenesis and gluconeogenesis  | Kasetti et al., 2012; Jung et al., 2007; Son et al., 2011; Pei et al., 2016   |
| Caffeoylquinic acids             | Potatoes, eggplants, peaches, prunes, and coffee beans   | insulin response   | Human salivary and pancreatic $\alpha$ -amylase; hepatic glucose-6-phosphatase   | Narita & Inouye, 2009; Nurul Islam et al., 2013; Arion et al., 1997; Hemmerle et al., 1997; Henry-Vitrac et al., 2010; Reis et al., 2018  |
| Anthocyanins, and anthocyanidins | Berries, eggplants, avocado, oranges, olives, red onion, fig, sweet potato, mango, and purple corn           | Antioxidant; anti-inflammatory; blood glucose regulation   | Oxidative stress; the levels of cholesterol, triglycerides, and low-density cholesterol  | Zhu et al., 2012; Crozeir, Jaganath & Clifford, 2009; Roy et al., 2008; Tsuda et al., 1999; Shi et al., 2017  |
| Stilbenoids                      | Grapevine, berries, and peanuts  | Metabolic control; DNA integrity; insulin sensitivity; pancreatic $\beta$ -cell and hepatoprotective activity  | Oxidative damage and inflammation; digestive enzymes   | Bahmanzadeh et al., 2019; Rašković et al., 2019; Sadi et al., 2015; Yan et al., 2018; Zhao et al., 2019; Bhakkiyalakshmi et al., 2014; El-Sayed et al., 2015                                    |
| Procyanidins                     | Berries, red cabbage, apple, cocoa, cinnamon, wine, and nuts   | Insulin and AMPK signaling pathways; cellular NAD <sup>+</sup> and SIRT1 concentrations  | Pro-inflammatory cytokine expression; target digestive enzymes   | Ogura et al., 2016; Yamashita et al., 2016; Aragones et al., 2016; Vazquez-Flores et al., 2018  |
| Tannins                          | Coffee, tea, wine, grapes, berries, apples, apricots, barley, peaches, dry fruits, mint, basil, and rosemary | AMPK phosphorylation; glucose uptake in adipose tissue via IRS-1 phosphorylation   | $\alpha$ -Amylase and $\alpha$ -glucosidase activity; AGEs formation and enzymatic activity of maltase, lactase and sucrose  | Hosoyama et al., 2003; Matsui et al., 2007; Miranda Pedroso et al., 2019  |
| Curcumin                         | Turmeric-flavored foods and beverages  | Protecting pancreatic $\beta$ -cells   | Insulin resistance; diabetic cardiomyopathy; oxidative stress  | Jin et al., 2018; Pivari et al., 2019; Rashid et al., 2017; Zha et al., 2018  |



**FIGURE 5** Antidiabetic mechanisms of dietary polyphenols

## 4.2 | Isoflavones

Significant evidence from epidemiological investigations has shown that soybean isoflavones intake is linked to a lower risk of diabetes (Konishi et al., 2019). Soy isoflavones perform hypoglycemic effects in Goto-Kakizaki diabetic rats via suppression of carbohydrate digestion and glucose uptake in small intestine (Jin et al., 2018) and delay the process of renal interstitial fibrosis in diabetic nephropathic rats (Liu et al., 2018). Among soy isoflavones, puerarin, the 8-C-glucoside of daidzein, showed best hypoglycemic effects via improving insulin resistance and sensitivity, protecting pancreatic  $\beta$ -cells, exerting anti-inflammation activity, decreasing oxidative stress, and inhibiting Mailard reaction and advanced glycation end products formation (Chen et al., 2018; Chen, Yu, & Shi, 2018). Moreover, puerarin ameliorates diabetic complications, such as cardiovascular complications, diabetic nephropathy, retinopathy, neuropathy, and so on. Genistein benefits

type 2 diabetes via remarkably ameliorating hyperglycemia (Fu et al., 2012; Rockwood et al., 2019), enhancing  $\beta$ -cell proliferation and reducing apoptosis (Gilbert & Liu, 2013), ameliorating cardiac inflammation and oxidative stress (Gupta et al., 2015), improving fracture resistance (Odle, Dennison, Al-Nakkash, Broderick, & Plochoki, 2017), ameliorating vascular dysfunction (Valsecchi et al., 2011), and alleviating diabetic neuropathy, nephropathy, and retinopathy (Weng, Zhang, Wang, Ma, & Song, 2019).

Although daidzein does not affect the blood glucose level and glucose tolerance, but it induces an immunomodulatory effect in non-obese diabetic mice, the prophylactic effect of daidzein on the improvement of hyperglycemia, insulin resistance, dislipidemia, obesity, inflammation, and other complications associated with T2D was widely explored (Das et al., 2018; Huang, Xu, & Guo, 2019). Daidzein improves glucose homeostasis in Type 2 diabetic mice (Cheong et al., 2014). However, in a double-blind, randomized,

placebo-controlled trial, the 6-month supplementation of daidzein or genistein does not affect glycemic control and insulin sensitivity in Chinese women with impaired glucose regulation (Ye et al., 2015).

Biochanin A showed hypoglycemic effect on streptozotocin-diabetic rats (Harini, Ezhumalai, & Pugalendi, 2012). Biochanin A significantly reduced insulin resistance, improved inulin sensitivity and lipid profile, and attenuates neuropathic pain in diabetic rats (Chundi et al., 2016). Formononetin treatment reduces insulin resistance and attenuate hyperglycemia in T2D, which may be due to increasing expression of SIRT1 in pancreatic tissues (Oza & Kulkarni, 2018). Methylated isoflavones look like they exhibit better antidiabetic effect than nonmethyl forms. However, it needs further investigation in animals and human studies.

### 4.3 | Catechins

Catechins are natural polyphenols present in edible and medicinal plants, especially in tea leaves (Khan & Mukhtar, 2018). Catechins show a very low bioavailability. After consumption of a single cup of tea, plasma concentrations of catechins rise quickly reaching a maximum after 2 hr, to then gradually decrease to reach the basal levels within 8 hr. Pharmacokinetic studies demonstrated that in human cells p-glycoprotein is responsible for both uptake and excretion of catechins (Vaidyanathan & Walle, 2003); however, due to the high individual variability existing between humans, the pharmacokinetics of catechins may change considerably from person to person (Ullmann et al., 2003).

There is a large agreement between researchers in sustaining that catechins have a positive impact on human health. Evidence suggested that the regular consumption of catechins could contribute to prevent gain of weight or the onset of chronic disease such as T2D or metabolic syndrome (Thielecke & Boschmann, 2009; Park, Bae, Im, & Song, 2014). In particular, catechins contribute to reduce glycaemia, enhance insulin sensitivity, decrease blood lipids, and reduce white fat depots.

It has been demonstrated that Epigallocatechin gallate acts as a reversible noncompetitive inhibitor of pancreatic  $\alpha$ -glucosidase, showing an  $IC_{50}$  value lower than that calculated for acarbose. This explains why the assumption of a cup of tea before a meal is enough to delay intestinal glucose adsorption (Xu et al., 2019; Li et al., 2018). Interestingly, it has been observed that the inhibitory power of catechins varies depending on their chemical structure. Kamiyama and co-workers demonstrated that galloylated catechins are more effective than nongalloylated catechins in inhibiting  $\alpha$ -glucosidase and  $\alpha$ -amylase (Kamiyama et al., 2010). Moreover, other tea polyphenols, such as theaflavin-3-O-gallate, resulted to be potent inhibitors of maltase (Matsui et al., 2007). Besides acting as glucosidase inhibitors, catechins are able to interfere with the action mechanism of glucose transporters present onto plasma membrane of intestinal cells. Studies conducted using rabbit intestinal brush-border membrane vesicles showed that Epicatechin gallate and EGCG act as competitive inhibitor of the  $Na^+$ -dependent glucose transporter (SGLT1). (Kobayashi et al., 2000; Shimizu, Kobayashi, Suzuki, Satsu, & Miyamoto, 2000). These

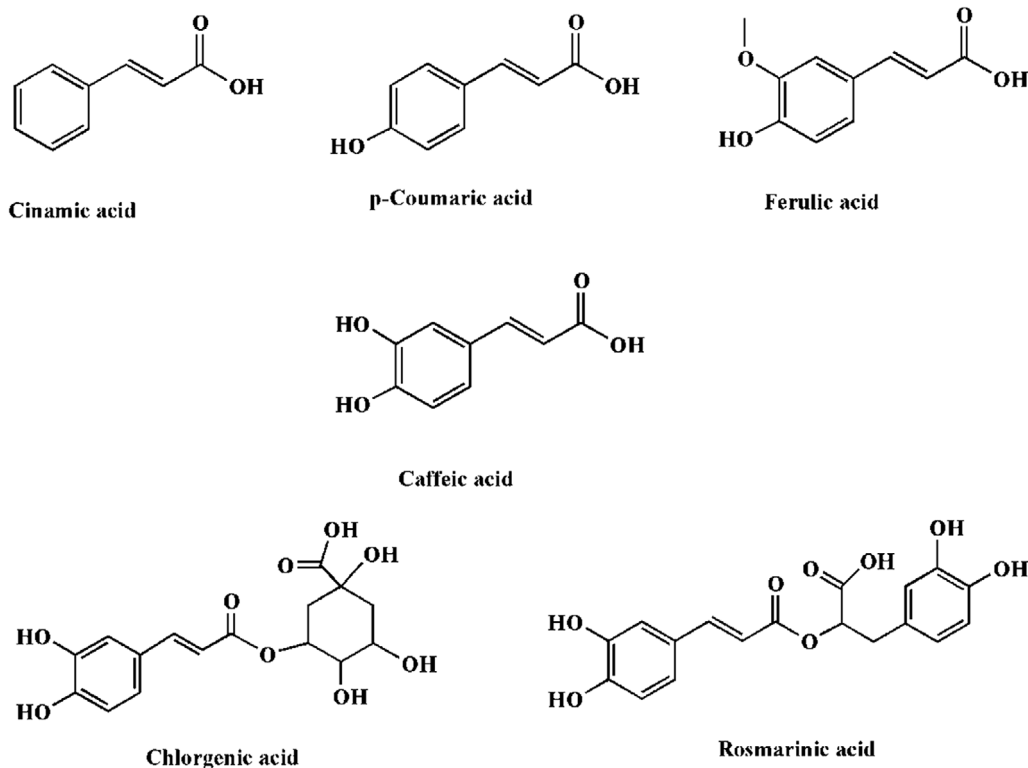
data were also confirmed by tests conducted on healthy volunteers. It has been observed that administration of green tea powder or EGCG prior assumption of a glucose solution reduced intestinal carbohydrate absorption (Tsuneki et al., 2004; Zhong, Furne, & Levitt, 2006). Together, these results suggested that catechins modulated glucose absorption by two independent mechanisms: inhibiting glucosidase and/or interfering with the glucose transport through the plasma membrane of intestinal cells.

Another important question concerns the effect of catechins on glucose uptake by peripheral tissues. A plethora of data confirmed that in muscle cells, catechins stimulated either transcription or translocation of GLUT4 to plasma membrane through both PI3K- and AMPK-dependent pathways (Ashida et al., 2004; Li et al., 2011; Takagaki et al., 2019; Ueda et al., 2008; Ueda-Wakagi et al., 2018). Interestingly, in adipocytes catechins modulate glucose uptake in a different mode, depending from their chemical structure. In particular, nongallate-type catechins stimulate PI3K activity and GLUT4 translocation onto the plasma membrane, recapitulating the results of studies conducted on muscle cells. Conversely, gallate-type catechins, including EGCG, seem to decrease insulin-induced glucose uptake (Ueda et al., 2010). It has been suggested that such an inhibitory effect could be the consequence of the EGCG-induced AMPK activation. In accord with this hypothesis, Li and co-workers showed that treatment of epididymal adipocytes with EGCG leads to AMPK activation, which, in turn, inhibits the expression of genes involved in de novo fatty acids synthesis, and, in the same moment, increases the expression of genes associated with lipolysis and lipid oxidization (Li et al., 2018).

Moreover, there is evidence that EGCG interferes also with the bile acid metabolism. In fact, it has been demonstrated that chronic assumption of EGCG favors fecal excretion of bile acids and cholesterol. This finding explain why in mice fed with a high-fat western-style diet, assumption of EGCG with the diet decreases intestinal lipids absorption, reduces adipose depots and contributes to normalize lipid profile (Li et al., 2018). Catechins have important effects also on liver cells. Kim and co-workers showed that low doses of EGCG stimulate glycogen synthesis and glucose uptake, whereas inhibit lipogenesis in liver cells (Kim, Tan, Xiao, Sun, & Qu, 2013). On the other hand, it has been demonstrated that treatment of hepatocytes with EGCG reduces reactive oxygen species production, thereby dampening JNK-activated signaling pathway. Thus, acting as antioxidant, EGCG protects insulin receptor and IRS proteins from phosphorylation on serine residues, a phenomenon that contributes to the onset of insulin resistance (Solinas & Becattini, 2016). Finally, it has been showed that treatment of HepG2 cells with EGCG stimulates nuclear translocation of Nrf2, which modulates the expression of antioxidant genes and reduces the expression of PTP1B, one the most important negative regulators of activated insulin receptor (Mi et al., 2018).

### 4.4 | Hydroxycinnamic acids

Several important hydroxycinnamic acids, such as cinnamic acid, *p*-coumaric acid, ferulic acid, caffeic acid, chlorogenic acid, and rosmarinic



**FIGURE 6** Chemical structure of important hydroxycinnamic acids

acid (Figure 6), have shown considerable hypoglycemic activity via *in vivo* experiments, such as streptozotocin, alloxan, and dietary (high fructose and fat diets) inducing T2D in animal models.

Cinnamic acid improved glucose intolerance and insulin resistance in streptozotocin (STZ)-induced diabetic rats (Kasetti, Nabi, Swapna, & Apparao, 2012). Ferulic acid reduced blood glucose level and increased blood insulin level in several diabetic animal models (Jung, Kim, Hwang, & Ha, 2007; Ohnishi et al., 2004). Ferulic acid also increased glucokinase activity (Jung et al., 2007) and decreased glucose-6-phosphatase and phosphoenolpyruvate carboxykinase activities in liver (Son, Rico, Nam, & Kang, 2011). Caffeic acid has been studied extensively in experimental diabetes and related complications. Caffeic acid shows hypoglycemic effects (Celik, Erdogan, & Tuzcu, 2009; Jung, Lee, Park, Jeon, & Choi, 2006), improves insulin level (Cy, Mc, Kc, & Mc, 2010), and enhances glucose intolerance (Bezerra et al., 2012) in diabetic animals.

*p*-Coumaric acid shows antidiabetic activity by reducing the intestinal absorption of carbohydrate, modulating glucose metabolism enzymes, improving  $\beta$ -cell function, stimulating insulin secretion, increasing insulin sensitivity, activating AMP-activated protein kinase, inhibiting adipogenesis and gluconeogenesis, and enhancing antioxidant potential and anti-inflammation effects (Pei, Ou, Huang, & Ou, 2016). The supplementation of *p*-coumaric acid can prevent bone loss (Yamaguchi, Uchiyama, & Lai, 2007), inhibit diabetes-associated spontaneous destruction of periodontal tissue by (Bhattarai et al., 2019), and alleviate diabetic nephropathy in diabetic animals (Zabad, Samra, & Eissa, 2019).

Chlorogenic acid is the major phenolic components in coffee, which evidently reduces the risk of type 2 diabetes. Chronic dietary chlorogenic acid consumption attenuated cardiovascular, liver, and metabolic changes (Bhandarkar, Brown, & Panchal, 2019). Chlorogenic acid was found to attenuate diabetic complications in animals such as retinopathy via inhibiting retinal neoangiogenesis (Mei et al., 2018) and sensorineural auditory function (Hong, Nam, Woo, & Kang, 2017). However, chlorogenic acid could lower the fasting plasma glucose and HbA1c levels during late diabetes in db/db mice (Jin et al., 2015), and there is no sufficient evidence that decaffeinated coffee-enriched chlorogenic acid can control blood glucose in animals (Faraji, 2018). Chlorogenic acid poorly inhibits carbohydrate-digesting enzymes (Nyambe-Silavwe & Williamson, 2018) and weakly impacted the fasting blood glucose level and blood glucose levels in the oral glucose tolerance tests in *kk-[a.sup.y]* mice (Igarashi, Takahashi, & Sato, 2017). Chlorogenic acid supplementation in a high-fat diet does not protect against features of the metabolic syndrome in diet-induced obese mice (Mubarak, Hodgson, Considine, Croft, & Matthews, 2013).

Rosmarinic acid could protect pancreatic  $\beta$ -cell dysfunction and glucolipotoxicity-mediated oxidative stress (Govindaraj & Sorimuthu, 2015), ameliorate scopolamine-induced memory impairment (Hasanein & Mahtaj, 2015) and diabetic neuropathy (Hasanein & Mohammad, 2014), attenuate vascular dysfunction (Sotnikova et al., 2013), and prevent diabetes-induced sexual disorders (Khaki, Imani, & Golzar, 2012).

## 4.5 | Caffeoylquinic acids

It has been demonstrated that 5-caffeoylquinic acids inhibit both human salivary and pancreatic  $\alpha$ -amylase, suggesting that these compounds could contribute to reduce intestinal glucose absorption after meal in obese or diabetic subjects (Narita & Inouye, 2009; Nurul Islam et al., 2013). Despite studies of pharmacokinetic highlighted that caffeoylquinic acids are poorly absorbed from digestive tracts (Lafay, Morand, Manach, Besson, & Scalbert, 2006), numerous studies have been addressed to assess whether caffeoylquinic acids could influence the metabolism of peripheral tissues. It has been reported that in vitro dicaffeoylquinic acids inhibit hepatic glucose-6-phosphatase, the enzyme that catalyzes the last reaction of gluconeogenesis, in a competitive manner. This evidence raised the question whether caffeoylquinic acids could exert their hypoglycemic activity by inhibiting hepatic glucose production (Arion et al., 1997; Hemmerle et al., 1997; Henry-Vitrac, Ibarra, Roller, Méillon, & Vitrac, 2010). However, instant coffee, which contains large amount of 5-caffeoylquinic acid, did not change the glucose adsorption in rats (Bassoli et al., 2015). This result can be explained by hypothesizing that the concentration of caffeoylquinic acids in liver cells resulted too low to inhibit of the G-6-Pase (Bassoli et al., 2015).

PTP1B is one the most promising targets to improve insulin sensitivity, and overcome insulin resistance in peripheral tissues (liver, muscle, and adipocytes) (Eleftheriou, Geronikaki, & Petrou, 2019). Interestingly, recent studies demonstrated that chlorogenic acid and some caffeoylquinic acid derivatives behave as noncompetitive inhibitor of PTP1B: among all caffeoylquinic acids resulted the most potent inhibitor, showing a  $K_i$  value of about 15 micromolar (Chen et al., 2014; Zhang et al., 2018). These data suggest that caffeoylquinic acids could be used to improve insulin sensitivity in obese or T2D subjects. In keeping with this hypothesis, it has been reported that treatment with chlorogenic acid enhances glucose uptake in both insulin-sensitive and insulin-resistant adipocytes (Alonso-Castro, Miranda-Torres, González-Chávez, & Salazar-Olivo, 2008).

Finally, studies conducted on human volunteers showed that the long-term assumption of coffee or extracts rich in caffeoylquinic acids reduces levels of blood glucose, increases the insulin response (Reis, Dórea, & da Costa, 2018), attenuates hepatic insulin resistance (Lecoultre et al., 2014), reduces serum lipids, and favors a reduction of body weight (Martínez-López, Sarriá, Mateos, & Bravo-Clemente, 2019). Together, these evidences support the hypothesis that caffeoylquinic acids have a deep impact on energetic metabolism of humans and can explain why the extracts rich in these compounds are recommended by traditional medicine for treatment of diabetes and obesity (Spínola & Castilho, 2017; Xie et al., 2019).

## 4.6 | Anthocyanins/anthocyanidins

The biological activities of anthocyanidins have been extensively studied, including health promotion effects such as antioxidant, anti-inflammatory, and blood glucose regulation (Zhu, Jia, Wang, Zhang, &

Xia, 2012). Anthocyanidins showed antidiabetic activity mainly via inhibition of oxidative stress, improvement of insulin resistance, and promotion of insulin secretion.

Anthocyanidins have a phenolic hydroxyl structure and are a class of hydroxyl donors with strong free radical scavenging ability. Anthocyanidins could reduce blood glucose by enhancing the antioxidant ability of bio-organisms through upregulating superoxide dismutase (SOD), lowering serum malonic dialdehyde, and inhibiting increasing thiobarbituric acid reactive substances (Roy, Sen, & Chakraborti, 2008; Tsuda, Horio, & Osawa, 1999). In vitro experiments indicated that cyanidin-3-glucoside protected cells from high glucose-induced oxidative stress by activating of glutathione synthesis (Zhu et al., 2012). Islet  $\beta$  cells are very sensitive to oxidative stress due to low expression of antioxidant enzymes such as CAT, SOD, and GPx in islets (Evans, Goldfine, Maddux, & Grodsky, 2003). Anthocyanin-rich mulberry extract exerted oxidative stress on islet cells against hyperglycemia through AMPK/ACC/mTOR pathway (Yan & Zheng, 2017).

Anthocyanidins could improve insulin resistance by regulating blood lipid through reducing the levels of cholesterol, triglycerides, and low-density cholesterol and increasing the level of apolipoprotein and high-density cholesterol (Shi, Loftus, McAinch, & Su, 2017). Anthocyanidin-enriched bilberry extracts improved insulin resistance in KK-A<sup>y</sup> mice, and reduced total cholesterol and triglycerides in liver and serum (Takikawa, Inoue, Horio, & Tsuda, 2010). Pro-inflammatory factors such as TNF- $\alpha$  and IL-6 were found associated with insulin resistance (Guo et al., 2012). Studies also shown that Cyanidin-3-glucoside inhibited 3T3-L1 cell adipocytes, activated insulin pathway via FoxO1, and inhibited TNF- $\alpha$ -mediated insulin resistance (Guo et al., 2012).

Anthocyanins promoted insulin secretion in many ways (Rosanska & Regulska-Ilow, 2011). Cyanidin-enriched purple potato extract promoted insulin secretion by upregulating the expression of intracellular Ca<sup>2+</sup> signaling pathway and glucose transport-related gene (*Glut2*) in mouse islet beta cells (INS1) (Sun, Du, Navarre, & Zhu, 2018). Anthocyanidins (delphinidin 3-arabinoside) in fermented berry beverages regulated DPPIV and its substrate GLP-1, increased insulin secretion, and upregulated mRNA expression of insulin receptor-related genes (Johnson & Mejia, 2016). Delphinidin 3-rutinoside could induce GLP-1 release via a calcium-dependent kinase pathway (Kato, Tani, Terahara, & Tsuda, 2015).

## 4.7 | Stilbenoids

Dietary stilbenoids have shown antidiabetic activity in animal models and human studies. However, most data focused on resveratrol, pterostilbene, and polydatin. Other stilbenoids are rarely reported as antidiabetic agents. Resveratrol supplement improves metabolic control (Rašković et al., 2019), increases DNA integrity and sperm parameters (Bahmanzadeh, Goodarzi, Rezaei, Fathi, & Alizadeh, 2019), enhances insulin sensitivity (Sadi et al., 2015) and cardiovascular function (Yan, Sun, & Xu, 2018), prevents cognitive deficits by attenuating oxidative damage and inflammation (Gocmez et al., 2019), contributes hepatoprotective effects (Pektaş et al., 2016), alleviates testicular dys-

function (Faid, Al-Hussaini, & Kilarkaje, 2015), reduces oxidative stress (Bagul, Deepthi, Sultana, & Banerjee, 2015) and inflammatory response (Sadi et al., 2015), and protects pancreatic  $\beta$ -cell (Ku et al., 2012) in diabetic animals.

The antidiabetic action of resveratrol has several tissue targets: liver, skeletal muscle, and pancreas. In the liver, resveratrol modifies the activity of enzymes controlling glucose homeostasis. Indeed, it restores normal activity of enzymes that are altered in diabetic individuals. Thus, it reduces the activity of phosphoenolpyruvate carboxylase, lactate dehydrogenase, and glucose-6-phosphatase (Palsamy & Subramanian, 2009) and increases the activity of hexokinase and pyruvate kinase. Moreover, resveratrol increases hepatic glycogen content by activating glycogen synthase and inhibiting glycogen phosphorylase (Palsamy & Subramanian, 2009). These changes lead to a reduction in hepatic glucose output.

Another important target of resveratrol is skeletal muscle, the main tissue responsible for glucose uptake in the body. In muscles, this compound increases the number of glucose transporter GLUT4 (Burgess et al., 2011; Do et al., 2012), as well as their translocation to plasma membrane of myocyte (Deng, Hsieh, Huang, Lu, & Hung, 2008; Tan et al., 2012), via PI3K-Akt pathway (Chi et al., 2007), which leads to enhanced intracellular glucose transport. Moreover, it increases fatty acid oxidation, thus avoiding lipotoxicity that leads to insulin resistance (Chen et al., 2011).

As far as pancreas is concerned, resveratrol improves antioxidant defense in pancreatic tissue, because it enhances the activity of antioxidant enzymes (CAT, SOD, GPx, and glutathione-S-transferase) (Palsamy & Subramanian, 2010). Furthermore, this polyphenol is able to reverse degeneration in beta cells in diabetic rats and also to prevent beta cell apoptosis due to the inhibition of caspase-3. As a consequence, plasma insulin level increases.

Inflammation is also closely related to the onset and development of diabetes (Xu et al., 2003) and thus the anti-inflammatory effect of resveratrol is involved in glucose homeostasis improvement induced by this compound in diabetic subjects. In this context, it has been reported that resveratrol decreases the expression of transcription factor NF- $\kappa$ B, as well as pro-inflammatory cytokines (IL-1 $\beta$  and IL-6) in liver (Andrade et al., 2014).

Pterostilbene (*trans*-3,5-dimethoxy-4-hydroxystilbene) is a dimethoxyl derivative of resveratrol, which increases bioavailability because the presence of just one hydroxyl group (instead of three as in the case of resveratrol) in its chemical structure makes it to exhibit increased absorption and decreased phase II metabolism in intestine and liver. Pterostilbene showed antidiabetic activity via regulating glucose metabolism enzymes (Pari & Satheesh, 2006), inhibiting digestive enzymes (Zhao et al., 2019), protecting pancreatic  $\beta$ -cell (Bhakkialakshmi et al., 2014), contributing hepatoprotective activity (El-Sayed, Mansour, & Nady, 2015), enhancing antioxidant signaling pathways (Elango, Dornadula, Paulmurugan, & Ramkumar, 2016), ameliorating insulin sensitivity (Kosuru & Singh, 2017), and reducing oxidative stress (Kosuru & Singh, 2017; Kosuru et al., 2018). Piceatannol was found to promote glucose uptake and reduce the blood glucose levels in db/db mice (Minakawa, Miura, & Yagasaki,

2012; Uchida-Maruki et al., 2015). Polydatin ameliorates diabetic fibronectin (Xie et al., 2012) and cardiomyopathy (Zhang et al., 2017), improves glucose and lipid metabolism (Hao et al., 2014), and protects diabetic heart against ischemia-reperfusion injury (Yu et al., 2018). The structure-antidiabetic activity relationship of stilbenoids is not clear due to limited data.

The antidiabetic action of pterostilbene is due in part to the effects on enzymes involved in glucose and glycogen metabolism. This phenolic compound decreased the expression of hepatic glucose 6-phosphatase and fructose 1,6-biphosphatase, two gluconeogenic enzymes, and increased the expression of the glycolytic enzyme hexokinase in rats showing type 2 diabetes induced by streptozotocin and nicotinamide administration (Pari & Satheesh, 2006; Satheesh & Pari, 2006). In line with these results, Gómez-Zorita et al. (2015) showed that pterostilbene decreased insulin resistance index and decreased the activity of glucokinase in skeletal muscle from rats showing insulin resistance induced by high-fat high-fructose feeding. In addition, in this study rats treated with pterostilbene showed increased ratio phosphorylated-Akt/total Akt in skeletal muscle, indicating that GLUT4 could be more efficiently translocated to the surface membrane, and also increases in parameters related to fatty acid oxidation, showing thus a protection against lipotoxicity. Upregulation of GLUT4 by AMPK phosphorylation in skeletal muscle has also been observed in a clinical trial carried out in a cohort of diabetic subjects (Goh et al., 2014).

Another proposed mechanism for the antidiabetic effect of pterostilbene is its antioxidant activity. In fact, several studies have shown decreases in CAT, SOD, and GPx (Sun et al., 2019). Moreover, Bhakkialakshmi et al. (2014) showed a clear reduction in oxidative stress via the NF-E2-related factor 2 (Nrf2) downstream target genes, heme oxygenase-1, CAT, SOD, and GPx, and increased expression of anti-apoptotic protein, Bcl-2 as well as the downregulated of the pro-apoptotic proteins Bax and caspase-3, in pancreatic INS-1E cells. With regard to the inflammation, pterostilbene has shown interesting anti-inflammatory effects by inducing reductions in plasma pro-inflammatory cytokines, such as TNF- $\alpha$ , IL-6, and CRP (Sun et al., 2019).

Little information has been reported concerning piceatannol, a hydroxylated analog of resveratrol. The administration of piceatannol lowers blood glucose levels in db/db mice (Uchida-Maruki et al., 2015). Unfortunately, the authors did not analyze the mechanisms underlying the glucose-lowering effect of piceatannol. Skeletal muscle can be involved in the beneficial effects because Minakawa et al. (2012) observed that piceatannol increased the glucose uptake in L6 myotubes through promotion of GLUT4 translocation to plasma membrane via AMPK activation.

#### 4.8 | Procyanidins

Procyanidins (PCs) are polyphenolic compounds that belong to the class of flavonoids and are oligomers of monomeric flavan-3-ols (+)-catechin and (-)-epicatechin (Gonzalez-Abuin et al., 2015) (Figure 7). The B-type PCs are formed by monomeric units linked to each other



B oligomers have hypoglycemic activity and can improve insulin sensitivity in type 2 diabetes. (Lu et al., 2011).

In another study investigating the effects of oral administration of PCs from apples on glucose metabolism using db/db diabetic mice, an improvement in glucose tolerance, insulin resistance, and hepatic gluconeogenesis was observed, by suppressing pro-inflammatory cytokine expression. It has been suggested that suppression of hepatic inflammation may be a mechanism with possible beneficial health effects in diseases with disrupted glucose metabolism. When *C. cassia* extract (CC-E) and *Cinnamomum tamala* extract (CT-E) rich in B- and A-type procyanidin oligomers were administered by gavage to diabetic db/db mice in a study conducted by Chen et al. (2012), it was observed that both CC-E and CT-E exhibited antidiabetic effects and that lipid accumulation in the adipose tissue and liver was inhibited by CC-E, whereas CT-E mainly improved seric and pancreatic insulin concentration.

A study on male mice explored the protective effects of procyanidin A2 against glucose homeostasis disturbance and gene expression of pancreatic and duodenal homeobox 1 (Pdx1) as well as glucose transporter 2 (Glut2) induced by bisphenol A (BPA). The results showed that procyanidin A2 strongly prevents islet cells apoptosis and that co-administration of procyanidin A2 and BPA modified hyperglycemia. BPA reduced Pdx1, Glut2 mRNA expression, and antioxidant levels in pancreatic tissue, whereas procyanidin A2 prevented these effects. These findings suggest that use of plants rich in procyanidin A2 has preventive effects on T2D (Ahangarpour, Afshari, Mard, Khodadadi, & Hashemitabar, 2016). Another study, using dimeric and tetrameric PCs from black soybean seed coat extracts, focused on translocation of glucose transporter 4 (GLUT4), hypoglycemic effects, and underlying molecular mechanisms in skeletal muscle of mice. The hypoglycemic effects of procyanidins were compared with those of (-)-epicatechin and major the anthocyanin cyaniding 3-O- $\beta$ -glucoside (C3G) monomer. The obtained results showed that the trimeric and tetrameric procyanidins activated both insulin and AMPK signaling pathways to induce the translocation of GLUT4 in mice skeletal muscle. It has been confirmed that procyanidins suppressed acute hyperglycemia induced by an oral glucose tolerance test in a dose-dependent manner. Among these beneficial effects, cinnamatin A2, one of tetramers, was most effective (Yamashita et al., 2016).

In diabetes, decreased levels of beta cell sirtuin SIRT1 could be a key step in the onset of beta cell dysfunction, occurring via abnormal elevation of ROS levels and amplification of beta cell IL1 $\beta$  synthesis. Aragones et al. (2016) demonstrated that proanthocyanidin (PAC) administration increased dose dependently the hepatic NAD<sup>+</sup> content and mRNA levels of genes involved in the pathway of NAD<sup>+</sup> biosynthesis in the livers of healthy rats. The concomitant activation of SIRT1 by PACs was the result of increasing both the cellular NAD<sup>+</sup> and SIRT1 concentrations. This represents an attractive strategy to increase beta cell activity in the future. The results of these animal studies show that the hypoglycemic effect of PCs and their benefits as antidiabetic agents are mediated by various mechanisms and by structure-activity relationship. Some mechanisms include insulin-mimetic effects on liver and peripheral tissues, as well as on beta

cell function and/or mass. Procyanidins may also have complementary effects in collateral aspects related to diabetes (e.g., lipid accumulation and inflammatory profile).

Inhibition of is also an accepted strategy to prevent diabetes. PACs bind, precipitate, and inhibit enzymes in the digestive process, being potential bioDrugs. PAC degree of polymerization is responsible for differential inhibitory potency. Vazquez-Flores et al. (2018) used four semipurified fractions from *Carya illinoensis* kernels rich in oligomeric and polymeric PACs, which showed different inhibitory activity against intestinal proteases, lipases, and amylases, as predicted by in silico methods. The authors conclude that small oligomeric PACs could be inhibitors of digestive enzymes due to their capacity to enter and bind to the enzymes' specific cavities and suggest that experimental testing of this hypothesis may have a major role in understanding health-related biological actions of PACs.

#### 4.9 | Proanthocyanidins

In this scenario, numerous in vitro and in vivo studies have been performed to elucidate the antidiabetic mechanisms of proanthocyanidins, including reduction of carbohydrate digestion, modulation of hepatic glucose metabolism, protection of pancreatic  $\beta$ -cell function, and impact of skeletal muscle on glucose uptake. Proanthocyanidins have been reported to inhibit  $\alpha$ -glycosidase, an enzyme that breaks down starch and disaccharides to glucose (Johnson, de Mejia, Fan, & Lila, 2013; Lee, Cho, Tanaka, & Yokozawa, 2007; Schafer & Hogger, 2007), thus reducing carbohydrate digestion and consequently, the availability of glucose for absorption in intestine. It has been suggested that this activity increases as the molecular weight of the polyphenol increases (Ma, Sato, Li, Nakamura, & Hattori, 2010). Some authors have also observed the inhibition of  $\alpha$ -amylase, the enzyme that hydrolyzes the 1,4-glycosidic bonds in both amylose and amylopectin, but this result is controversial (Johnson et al., 2013).

As far as the modulation of hepatic glucose metabolism is concerned, proanthocyanidins increase glucose uptake and limit glucose output. It has been reported that these compounds increase hepatic glucokinase activity. This enzyme phosphorylates glucose to glucose-6-phosphate, thus facilitating the storage of glucose as glycogen and the disposal of glucose by glycolysis (Zhang et al., 2007). These polyphenols also decrease phosphoenolpyruvate carboxykinase, an enzyme that catalyzes an irreversible step of gluconeogenesis (Bang & Choung, 2014). Moreover, proanthocyanidins decrease glucose-6-phosphatase via activation of AMPK and PI3K/Akt pathways (Cordero-Herrera, Martin, Bravo, Goya, & Ramos, 2013; Kurimoto et al., 2013).

With regard to the effects on pancreatic  $\beta$ -cell function, proanthocyanidins are considered insulin secretagogues. Proanthocyanidins modulate pancreatic  $\beta$ -cell functions, such as prevention of oxidative stress, enhancement of insulin secretion, and promotion of  $\beta$ -cell survival (Yang & Chan, 2017). This ability to stimulate insulin secretion depends on several factors. One of them is the number of hydroxyl groups on their chemical structure; those compounds with higher number of hydroxyl groups are more effective (Chen et al., 2016). Another

important factor is the dose. Thus, in prolonged treatments, doses in the range of 25 mg/kg body weight are less effective than doses in the range of 15 mg/kg body weight. Ho, Kase, Wangenstein, and Barsett (2017) have demonstrated that proanthocyanidins stimulate glucose uptake in human myotubes in a range of concentrations of (0.1–10  $\mu$ M). Unfortunately, in this study the exact mechanism explaining this effect (for instance the effect on GLUT1 and GLUT4 glucose transporters) was not addressed.

Specially, grape seed proanthocyanidins are benefits for diabetic complications through attenuating diabetic nephropathy (Gao et al., 2018), preventing early functional and morphological abnormalities in the peripheral nerves (Ding, Dai, Jiang, Zhang, & Li, 2014), ameliorating pancreatic  $\beta$ -cell dysfunction and death (Hu, Shi, Chen, Zou, & Li, 2018) and glycation-associated cardiac damage (Cheng et al., 2007), protecting against early diabetic peripheral neuropathy by modulating endoplasmic reticulum stress (Ding, Dai, Zhang, et al., 2014), and inhibiting oxidative stress-induced vascular impairment in pulmonary arteries in diabetic animals (Pinna, Morazzoni, & Sala, 2017).

#### 4.10 | Tannins

Tannins are a heterogeneous group of water-soluble polyphenolic compounds of high molecular weight (500–3,000 Daltons) with 20 hydroxyl groups, present in plants, foods, and beverages. Tannins can delay intestinal glucose absorption and the onset of insulin-dependent diabetes mellitus by producing an insulin-like effect on insulin-sensitive tissues, which lowers glucose levels by regulating the antioxidant environment of pancreatic  $\beta$ -cells (Serrano, Puupponen-Pimiä, Dauer, Aura, & Saura-Calixto, 2009). Field bean, sweet potato, and amaranth leaves exhibit effective  $\alpha$ -amylase inhibition activity. Amaranth leaves and sweet potatoes having the highest activity. Similarly, the tannin and ellagic acid derivatives from Banaba (*Lagerstroemia speciosa* L.) leaves have been reported to be potent inhibitors of  $\alpha$ -amylase (Hosoyama, Sugimoto, Suzuki, Sakane, & Kakuda, 2003). Zhang and Kashket (1998) also identified tannins as the bioactive constituents in green and black teas responsible for inhibition of  $\alpha$ -amylase.

Condensed tannins present in acetonetic extract of food ingredients can significantly inhibit  $\alpha$ -glucosidase. Finger millet, field bean, sweet potato, and drumstick leaves, which have the highest tannin content, are most effective inhibitors of  $\alpha$ -glucosidase. Tannins have been reported to effectively inhibit intestinal  $\alpha$ -glucosidase activity similar to synthetic inhibitors such as acarbose and voglibose, which are already being used therapeutically to control noninsulin-dependent diabetes mellitus (Matsui et al., 2007). A study of patients with noninsulin-dependent diabetes mellitus revealed that tannic acid and tannin-rich nonalcoholic compounds of red wine can reduce the serum glucose levels after starch-rich meals (Gin, Rigalleau, Caubet, Masquelier, & Aubertin, 1999).

Acacia polyphenols extracted from the bark of the black wattle tree (*Acacia meansii*) are rich in unique catechin-like flavan-3-ols, such as robinetinidol and fisetinidol. Acacia polyphenols showed the antiobesity/antidiabetic effects on obese diabetic KKAY mice (Ikarashi et al.,

2011). Acacia polyphenols increased mRNA expression of adiponectin and decreased mRNA expression of TNF- $\alpha$  and PPAR $\gamma$  in white adipose tissue. Furthermore, Acacia polyphenols significantly reduced the mRNA expression of GLUT4 in skeletal muscle (Ikarashi et al., 2011).

Tannic acid has an insulin-like glucose transport stimulatory activity in adipocytes, whereas it exhibits “anti-insulin” activity in preadipocytes. The banaba extract without tannic acid did have glucose transport-stimulatory or adipocyte differentiation-inhibitory activity. It is possible that tannic acid regulates both activities through different targets and signaling pathways. Tannic acid did not induce any Insulin resistance-independent glucose transport, strongly supporting that tannic acid applied the insulin-mediated pathway(s) exclusively for glucose transport. Tannic acid stimulated phosphorylation of protein factors in the insulin-mediated glucose transport pathway (Liu et al., 2005).

A study on 36 diabetic Wistar rats revealed that a combination of hydrolysable tannin from Chinese natural gallnuts and condensed tannin from the bark of the black wattle tree (*Acacia meansii*) rich in galloytannins and catechins decreased the glycemic levels, which delayed carbohydrate digestion (Kato et al., 2017). The bark of *Cinnamomum zeylanicum* (a species of cinnamon) rich in tannins and flavonoids inhibited  $\alpha$ -glucosidase and decreased glycemic levels on streptozotocin-induced diabetic rats due to chronic malabsorption of carbohydrates (Choudhury et al., 2018).

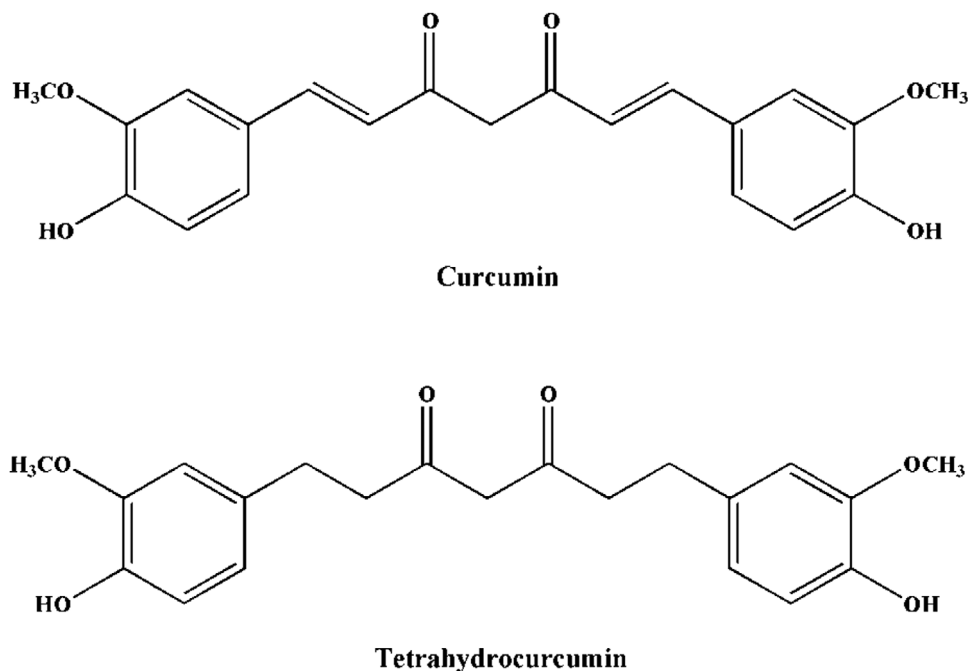
#### 4.11 | Curcumin

In animal models, curcumin and extracts rich in curcumin postpone diabetes development, protect beta-cell, decrease insulin resistance, regulate lipid metabolism, reduce diabetic cardiomyopathy, attenuate testicular injury and oxidative stress (Jin et al., 2018; Pivari, Mingione, Brasacchio, & Soldati, 2019; Rashid, Chowdhury, Ghosh, & Sil, 2017; Zha et al., 2018), as well as ameliorate diabetic complications, such as liver disorders, adipocyte dysfunction, neuropathy, nephropathy, vascular diseases, and pancreatic disorders (Zhang, Fu, Gao, & Liu, 2013). Curcumin analogs with shortened central seven-carbon chain hardly show hypoglycemic effects but potentially helpful for alleviating diabetes complications, whereas curcumin analogs preserving this chain reserve the hypoglycemic effects. For example, tetrahydrocurcumin (Figure 8) exhibited stronger antidiabetic activity than that of curcumin in hypoglycemic effect, improving carbohydrate metabolism, ameliorating liver and kidney injury, and restoring antioxidant enzymes activity (Rivera-Mancia et al., 2015).

### 5 | HUMAN STUDY AND CLINICAL TRIALS

#### 5.1 | Clinical and human data of polyphenols as antidiabetic agents

Despite an abundance of in vitro and in vivo evidence, there are very few clinical reports that demonstrate the effectiveness of polyphenols



**FIGURE 8** Chemical structure of curcumin and tetrahydrocurcumin

as a therapeutic agent against T2D. Here, we embark on randomized and concurrent clinical studies to evaluate the efficiency of polyphenols in management of diabetes to gain a better insight into its biological effects in humans.

Daily supplementation of 1,500 mg curcumin can decrease fasting blood glucose and weight and alleviate diabetic complications in type 2 diabetic patients in a randomized, double-blind clinical trial (Adibian et al., 2019; Hodaei, Adibian, Nikpayam, Hedayati, & Sohrab, 2019). A 9-month curcumin intervention prevents the prediabetes to develop T2D via improving overall function of  $\beta$ -cells (Chuengsamarn, Rattanamongkolgul, Luechapudiporn, Phisalaphong, & Jirawatnotai, 2012). Supplementation of both curcumin (1,000 mg/day) and piperine (10 mg/day) for 12-week period to 118 patients with T2D resulted in increased adiponectin and decreased leptin levels along with decreased inflammation.

Certain clinical studies have convincingly proved the antidiabetic effect of resveratrol; this could be resulting from improved glycemic control and insulin resistance. The first randomized clinical trial proved that resveratrol supplementation improves insulin sensitivity along with reduction of oxidative stress in T2D patients (Brasnyo et al., 2011). The effect of resveratrol administered at 1 g/day for a period of 45 days was beneficial for T2D patients, as they showed improved levels of fasting blood glucose, HbA1c, insulin, and systolic pressure (Movahed et al., 2013). Other clinical studies, however, reported contradicting results. Thazhath et al. (2016) conducted a randomized trial and supplemented resveratrol (500 mg) twice daily for 5 weeks to T2D patients, which revealed no significant improvement in glycemic control (Thazhath et al., 2016). In another placebo-controlled, double-blind, randomized trial, conducted in 2016, revealed that resveratrol treatment

(500 mg/day) for 6 months did not improve metabolic parameters in T2D (Bo et al., 2016). Resveratrol may improve glycemic control (Bhatt, Thomas, & Nanjan, 2012) and neurovascular coupling and cognitive performance in T2D (Wong, Raederstorff, & Howe, 2016). Resveratrol supplementation does not improve hepatic or peripheral insulin sensitivity (Timmers et al., 2016). In patients with diet-controlled type 2 diabetes, 5 weeks of twice-daily 500-mg resveratrol supplementation had no effect on GLP-1 secretion, glycemic control, gastric emptying, body weight, or energy intake (Thazhath et al., 2016).

A randomized controlled trial conducted with 60 T2D patients administered green tea-extract powder daily for 2 months showed reduction in HbA1c level and diastolic blood pressure, whereas changes in body weight, systolic blood pressure, fasting blood glucose, HOMA index, and lipid levels were not observed (Fukino et al., 2008). In contrast, in clinical trial of T2D subjects administered with 1,500 mg of green tea, no significant changes in fasting HbA1C, blood glucose, and lipoproteins were observed (Hsu et al., 2011).

Berberine, an isoquinolien alkaloid of barberry, regulates carbohydrate and fat metabolism in vitro and in vivo. A meta-analysis of 14 clinical studies reported the effects of berberine to be like those of commercially available drugs such as glipizide, metformin, and rosiglitazone (Dong, Wang, Zhao, & Lu, 2012). Supplementation of berberine increased plasma antioxidant activity and lowered blood glucose and altered lipid profile in T2D patients. Yin, Xing, and Ye (2008) conducted a study in Chinese population with 36 newly diagnosed T2D with berberine supplementation (1.5 g/day) for a 3-month trial and proved its efficiency comparable to metformin. In the same study, berberine supplementation to 48 T2D patients at a dosage of 500 mg, thrice daily, for 3 months resulted in decrease in blood glucose levels within a week.

Clinical trials have investigated the impact of supplementation of quercetin, one of the most abundant flavanoids, on T2D subjects. Single oral dose (400 mg) of quercetin effectively suppressed postprandial blood glucose levels in patients with T2D loaded with maltose, which may be attributed to  $\alpha$ -glucosidase inhibition (Hussain, Ahmed, Mahwi, & Aziz, 2012). Also, 100 mg of quercetin capsules each day for 49 patients for 10 weeks reduced cardiometabolic risks in male smokers and improved blood glucose, lipid profiles, and blood pressure in a clinical setup (Lee et al., 2011), whereas 47 T2D patients on diet supplemented with either quercetin (250 mg/d) or identical placebo (cellulose) capsules administered orally for 8 weeks showed no significant hypoglycemic and/or hypolipidemic effects (Zohreh, Seyede, Mohamad, & Abbas, 2014).

Anthocyanins exhibit antidiabetic property by reducing the levels of blood glucose and HbA1c, increasing the secretion of insulin, and improving insulin resistance. Liu et al. (2014) demonstrated that anthocyanins improved the endothelium-dependent vasodilation in diabetic individuals through the induction of adiponectin. Experimental studies have shown that cinnamon could be attributed to its beneficial effects on hyperlipidemia and glucose utilization. A clinical study with total of 60 T2D patients demonstrated that cinnamon supplementation (1–6 g/day) reduced the levels of blood glucose, serum triglyceride, and both Low density lipoprotein and total cholesterol in T2D patients (Khan, Safdar, Khan, Khattak, & Anderson, 2003).

Capsaicin is a polyphenol found in chili peppers reported for therapeutic uses in diseases such as diabetes, cardiovascular diseases, and cancer. In a clinical trial, supplementation of 5 g of *Capsicum frutescens* T2D patients resulted in a reduction in plasma glucose levels and maintenance of insulin levels (Chaiyasit et al., 2019).

## 5.2 | Clinical and human data of extracts or diet rich in polyphenols as antidiabetic agents

A randomized controlled trial found that a diet naturally rich in polyphenols improves glucose metabolism in individuals at high risk of diabetes (Bozzetto et al., 2015). A 4-week, double blind, randomized, placebo controlled trial involving 32 T2D patients showed that flavonoid-rich grape seed extracts significantly improved the biomarkers of inflammation, glycemia, and oxidative stress in the events of obese T2D subjects at high risk of cardiovascular (Kar, Laight, Roprai, Shaw, & Cummings, 2009). A double-masked, randomized controlled trial found that the daily intake of flavanol-containing cocoa might improve the vascular function of medicated T2D patients (Balzer et al., 2008). A randomized, double-blind, placebo-controlled trial with 48 T2D patients revealed that a 12-week daily supplementation of Pycnogenol® (125 mg), a French maritime pine bark extract rich in procyanidins and bioflavonoids, could increase diabetes control, reduce cardiovascular disease risk factors, and lower antihypertensive medicine use vs controls (Zibadi, Rohdewald, Park, & Watson, 2008). In a double-blind, 8-week randomized controlled study involving in 80 T2D patients, Brazilian green propolis (226.8 mg/day) rich in polyphenols and flavonoids was found to prevent T2D patients from worsen-

ing developments in blood uric acid and estimated glomerular filtration rate (Fukuda et al., 2015). A randomized, double-blind, placebo-controlled trial (34 subjects) showed that the supplementation of acacia polyphenol (250 mg/day) might improve glucose homeostasis in nondiabetic subjects with impaired glucose tolerance (Ogawa, Matsumae, Kataoka, Yazaki, & Yamaguchi, 2013).

Coffee polyphenols can improve peripheral endothelial function following glucose loading in healthy male adults (Ochiai et al., 2014). Coffees with different contents of chlorogenic acids did not show different degrees of influence on glucose or insulin responses in healthy humans (Rakvaag & Dragsted, 2016). Red wine polyphenols were found to have a beneficial effect on insulin resistance and lipoprotein plasma concentrations in a randomized clinical trial involving 67 men with high cardiovascular risk (Chiva-Blanch et al., 2013). A whortleberry extracts rich in anthocyanins significantly lowered the levels of fasting blood glucose, 2-hr postprandial glucose, and HbA1c in a randomized, double-blind, placebo-controlled clinical trial, consisting of 37 T2D patients (Kianbakht, Abasi, & Dabaghian, 2013).

Supplements of high-polyphenol chocolate could protect against endothelial dysfunction and oxidative stress in T2D during acute transient hyperglycemia, as induced by a 75-g oral glucose challenge in a double-blinded randomized controlled crossover study (Mellor, Madden, Smith, Kilpatrick, & Atkin, 2013). Daily consumption of polyphenol-rich extra-virgin olive oil might improve metabolic control and the profile of circulating inflammatory adipokines in overweight T2D patients (Santangelo et al., 2016). The powdered dried leaves of *Eugenia punicifolia* (Kunth) DC. (Myrtaceae), rich in flavonol glycosides, are effective as an adjuvant to the treatment of T2D patients. In a pilot noncontrolled study, a 3-month treatment with powdered dried leaves of *E. punicifolia* was found to significantly reduce glycosylated hemoglobin and basal insulin levels (Sales et al., 2014). The aqueous extract (0.15% infusions) of *Bauhinia forficata* (L) subsp. *pruinosa* (Fabaceae), rich in rutin, could significantly reduce HbA1c concentration in diabetic and prediabetic volunteers ( $n = 15$ ) (Tolozza-Zambrano, Avello, & Fernandez, 2015). However, the onion extract did not show a hypoglycemic effect on healthy volunteers in an oral glucose tolerance test.

In summary, polyphenols from coffee, guava tea, whortleberry, olive oil, propolis, chocolate, red wine, grape seed, and cocoa have shown antidiabetic effects in T2D patients by increasing glucose metabolism, improving vascular function, and reducing insulin resistance and HbA1c.

## 6 | DIETARY POLYPHENOLS AND THE GUT MICROBIOME FOR DIABETES

The gut microbiota composition has been associated with several trademarks of chronic diseases (e.g., obesity, type 2 diabetes, cardiovascular diseases, and nonalcoholic steatohepatitis). Certain types of bacteria are linked with some diseases, whereas others are mainly important for our health (Everard & Cani, 2013). In recent years, gut microbiota has gained growing attention as a novel factor in the

management of diabetes. Several well-known researches indicated that the gut microbiota differed completely between type 2 diabetic patients and healthy people. Larsen et al. (2010), for instance, carried out studies on the differences between the composition of the intestinal microbiota in T2D patients and nondiabetic persons. They reported that the proportions of the phylum Firmicutes and the class Clostridia were significantly reduced, whereas *Betaproteo* bacteria, positively correlated with plasma glucose, was highly enriched in the feces of T2D patients compared with nondiabetic persons. Interestingly, food also affected the diversity of human gut microbiota. In accordance with the results, animal and clinical studies showed that dietary polyphenols and polyphenol-rich foods reduced the risk of T2D and/or its complications (Nie, Chen, Hu, Fan, & Nie, 2019). In addition, polyphenols and their microbial metabolites can effectively modulate the balance of gut microbiota, improving glucose metabolism (Cardona, Andrés-Lacueva, Tulipani, Tinahones, & Queipo-Ortuño, 2013).

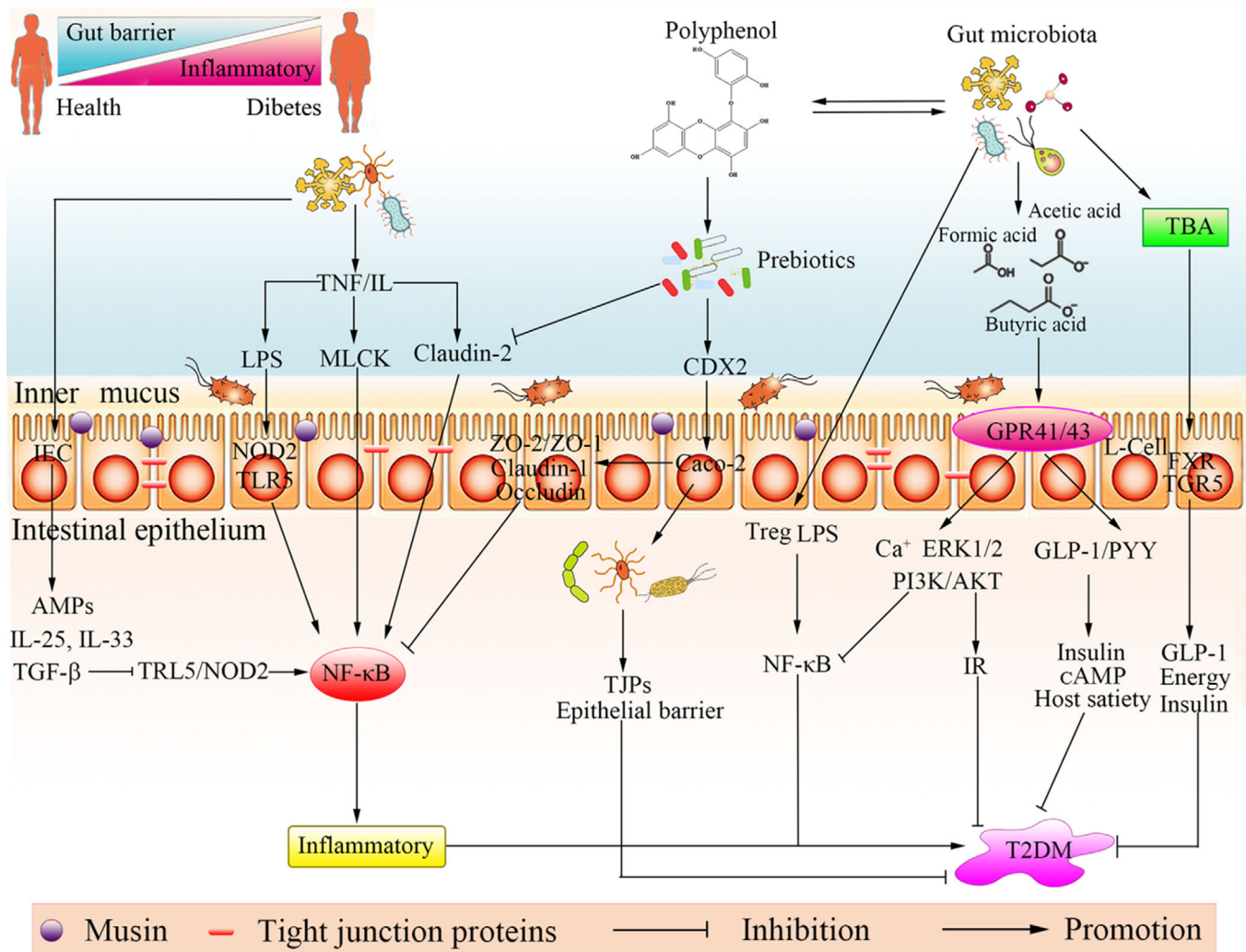
Limited researches have examined the effect of dietary polyphenols on gut microbiota in diabetes. More recently, Lin et al. (2019) carried out studies on Green Macroalgae *Enteromorpha prolifera* (EPW) polyphenols in the modulation of intestinal microflora profiles in type 2 diabetic mice. They reported that EPW extract treatment significantly increased the relative abundance of *Akkermansia* and decreased the proportion of *Alistipes* and *Turicibacter*. Similarly, (Yan et al., 2019) investigated the antidiabetic activity of extract of green macroalgae EPW and its flavonoid-rich fraction less than 3 kDa (EPW3) in type 2 diabetic mice. They observed that EPW and EPW3 flavonoids significantly changed the gut microbiota flora with an increased proportion of *Bacteroidetes* and a reduced amount of the phylum *Firmicutes*. Furthermore, it also increased the abundances of *Lachnospiraceae* NK4A136 group and *Alisties*, affecting the release of intestinal hormones for regulating insulin release. The antidiabetic activity of brown seaweed *Lessonia nigrescens* ethanolic extract (LNE), including phenolics and flavonoids, was investigated in type 2 diabetic mice fed with a high-sucrose/high-fat diet by (Zhao et al., 2018). They showed that the intake of LNE increased the growth of *Barnesiella*, *Helicobacter*, and *Turicibacter*, which were able to stimulate the host's antidiabetic effect, accompanied with the modification in the gene and protein expression of hepatic phosphatidylinositol 3-kinase and c-Jun N-terminal kinase.

It is worth noting that the difference apart from conventional treatments, a novel area of research for developing new strategies to tackle T2D using gut microbes is recognized. *Akkermansia* (reported to have effects on obesity, T2D, and gut inflammation) has recently been proposed as a new biomarker of intestinal health, indicating that the modulation of the *Akkermansia* may have beneficial effects on Type 2 diabetes (Blandino, Inturri, Lazzara, Di Rosa, & Malaguarnera, 2016; Delzenne, Cani, Everard, Neyrinck, & Bindels, 2015). Moreover, polyphenols were also found to positively regulate *Akkermansia* (Everard & Cani, 2013). For example, grape (Roopchand et al., 2015) and cranberry (Anhê et al., 2015) extracts rich in polyphenols were found to markedly increase the abundance of *Akkermansia*. Based on these findings, *Akkermansia* thwarts the deleterious increase in gluconeogenesis in diabetes, preventing the increase in glucose-6-phosphatase mRNA expression

(Everard, Belzer, et al., 2013). Similarly, *Bifidobacteria* also potentially play protective role in preventing T2D. Some studies showed that polyphenols also promoted the growth of *Bifidobacteria* (Bialonska et al., 2010), for instance, it was also observed that the pomegranate extract enhanced the total growth of *Bifidobacterium* spp. and *Lactobacillus* spp. The authors suggested that pomegranate oligomers composed of gallic acid, ellagic acid, and glucose units may account for the enhanced growth of specific bacteria. Likewise, Vendrame et al. (2011) observed a significant increase in the amount of *Bifidobacterium* after the consumption of a wild blueberry drink, suggesting an important role of the polyphenol present in wild blueberries on the intestinal microbiota composition modulation. This association may be related to *Bifidobacteria*-restored gut barrier function and reduce gut epithelium permeability thus preventing the penetration of pathogenic organisms and inflammatory substances such as lipopolysaccharides. Hence, *Bifidobacteria* potentially plays a protective role in T2D (Klinder et al., 2016). In addition to *Akkermansia* and *Bifidobacteria*, *Faecalibacterium* might be beneficial in the treatment of diabetes (Blandino et al., 2016). For example, red wine polyphenols significantly changed the gut microbiota by increasing the number of fecal *Bifidobacteria* and *Lactobacillus* (intestinal barrier protectors) and butyrate-producing bacteria (*Faecalibacterium prausnitzii*) (Moreno-Indias et al., 2016). It could be related to the role of the short-chain fatty acids such as butyrate formed by this gut microbiota in the regulation of the levels of gut hormones such as glucose-dependent insulinotropic polypeptide and glucagon-like peptide 1, which have important effects on carbohydrate metabolism (Moreno-Indias et al., 2016). Another study showed that the fecal samples of 174 healthy controls and 171 diabetic patients showed that diseased samples had lesser abundance of *F. prausnitzii*, butyrate-producing bacteria (Qin et al., 2012). In addition, the ratios of *Bacteroidetes* to *Firmicutes* significantly and positively correlated with reduced glucose tolerance (Larsen et al., 2010). Zhao, Chen, Yin, and Li (2017) showed that *L. nigrescens* ethanolic extract, rich in phenolics and flavonoids, had better glycemic control on type 2 diabetic mice, increasing the abundance of *Bacteroidetes* and reduced *Firmicutes* population in intestine.

Polyphenols and its degraded metabolites can also help ameliorate T2D. These components transformed by certain gut microbiota into secondary metabolites generally have greater absorption and bioactivity than their precursors (Nie et al., 2019). The microbial-derived flavonoid metabolites 3,4-dihydroxyphenylacetic acid and 3-hydroxyphenylpropionic acid may have antidiabetic potential by promoting survival and function of pancreatic  $\beta$ -cells (Fernández-Millán et al., 2014). Moreover, microbial metabolites of polyphenols might regulate the production of bile acids, which affect the host metabolism.

In short, studies have shown that there is a strong interaction between polyphenols and gut microbiota, which have the ability to protect against diabetes (Figure 9): first, polyphenols change the gut microbiota and promote growth of beneficial bacteria such as *Akkermansia*, *Bifidobacteria*, *Faecalibacterium prausnitzii*, and so on; second, not only polyphenols but also their microbial metabolites have greater bioactivity against diabetes; third, further studies are needed



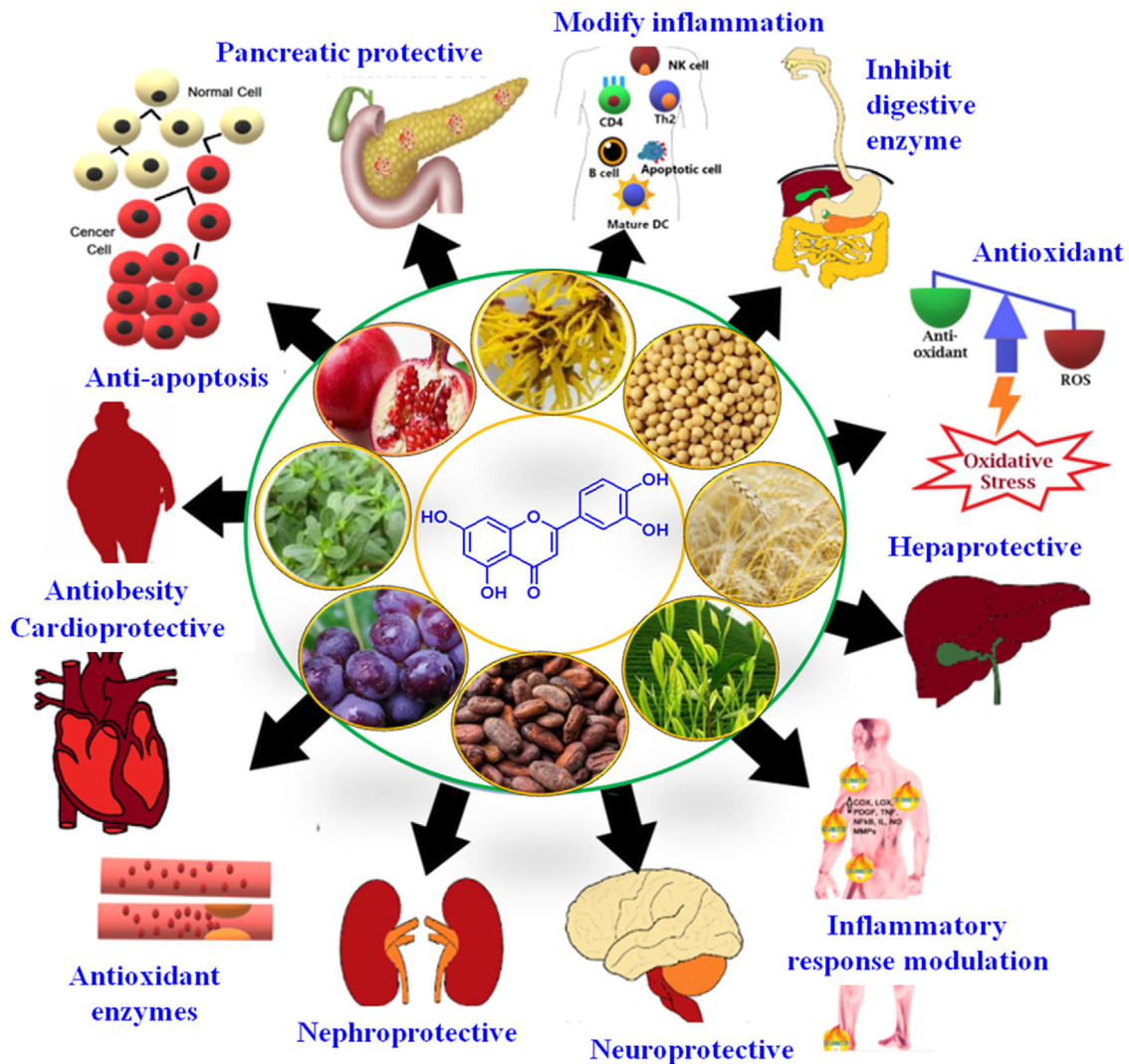
**FIGURE 9** Effect of polyphenols and gut microbiota on diabetes

to clarify the role of polyphenols/their microbial metabolites in gut microbiota.

## 7 | DIABETIC STATUS INFLUENCES THE BIOAVAILABILITY OF DIETARY POLYPHENOLS

The hyperglycemic status could affect the bioavailability of small molecule drugs by regulating absorption, distribution, biotransformation, and excretion. The bioavailability between drugs and dietary polyphenols is different in dose per day, complexity of the components, and interaction with food. Dietary polyphenols are poorly absorbed, highly metabolized, or rapidly eliminated. Only about 5–10% of polyphenols can be absorbed, and over 90% of polyphenols digested pass to the colon. In contrast, clinical drugs are typically sufficiently absorbed and transported to their target tissues. The hyperglycemic status significantly affects the carbohydrate, protein, and lipid metabolism. The systems that regulate these biochemical path-

ways are also in many cases involved in phytochemicals biotransformation. Thus, the hyperglycemia obviously influences the bioavailability of dietary polyphenols. For example, compared with healthy animals, a significant increase of  $C_{max}$  and Area under curve of mangiferin, baicalin, wogonoside, and oroxyloside in diabetic animals was found (Xiao & Högger, 2015; Zhang et al., 2018). The bioavailability of phlorizin was significantly improved in type 2 diabetic rats (Wang et al., 2019). Absorption of cynaroside, quercetin, luteolin, isorhamnetin, rutin, and formononetin in the diabetic rats was significantly higher than those in the normal rat (Wei, Chen, Liu, & Wei, 2017). However,  $C_{max}$  values for catechin, epicatechin, quercetin, and resveratrol conjugated metabolites were diminished in Zucker diabetic fatty rat (Chen et al., 2017). The bioavailability of methylated flavan-3-ol, resveratrol, and quercetin metabolite was significantly lower in Zucker diabetic fatty rat (Chen et al., 2017). Moreover, very little progress for hyperglycemia-mediated changes in bioavailability of bioactive phytochemicals has been archived. An understanding of how hyperglycemia altering the bioavailability of dietary polyphenols will lead to improve the benefits and clinical outcomes of these phytochemicals.



**FIGURE 10** Antidiabetic effects of dietary polyphenols

## 8 | PERSPECTIVES

T2D is one of the most serious public health problems in the world. Nonpharmacological (reasonable diet and exercise) or pharmacological approaches (drugs or insulin) are known to control T2D. However, the pharmacotherapy for T2D is a considerable cost for patients and has serious side effects. The use of plants appears as an attractive alternative to the classical antidiabetic treatment. They contain complex substances with many natural bioactive principles that would have fewer side effects. Determining how these different plant-specialized metabolites and other dietary constituents interact in the human body is important. Are these effects additive, synergistic, or antagonistic with respect to antidiabetic treatment? Novel antidiabetic treatments must ensure products of consistent quality in enough quantities to improve the health of millions.

Dietary polyphenols are the most abundant phytochemicals in human diet and have attracted great interests since the 1990s due to growing evidence of their beneficial effects for humans. In animal

level, dietary polyphenols prevent and manage T2D and ameliorates diabetic complications (Figure 10). The structure–activity relationship of polyphenols as antidiabetic agents is still not clear. Moreover, individual flavonoid or isoflavone has no therapeutic effect on diabetic patients, although the clinical data are very limited. Resveratrol, curcumin, and anthocyanins showed antidiabetic activity in humans. How T2D influences the bioavailability and bioactivity of dietary polyphenols is not well understood. An understanding of how diabetes alters the bioavailability and bioactivity of dietary polyphenols will lead to an improvement in their benefits and clinical outcomes.

### ACKNOWLEDGMENT

This work was financially supported by Multi-Year Research Grant of University of Macau (MYRG2018-00169-ICMS).

### CONFLICT OF INTEREST

The authors confirm that they have no conflict of interest to declare for this publication. [Correction added on 14 June 2021, after first online publication: The 'Conflict of interest' section was added.]

## ORCID

Jesus Simal-Gandara  <https://orcid.org/0000-0001-9215-9737>

Jianbo Xiao  <https://orcid.org/0000-0003-3311-770X>

## REFERENCES

- Adibian, M., Hodaie, H., Nikpayam, O., Sohrab, G., Hekmatdoost, A., & Hedayati, M. (2019). The effects of curcumin supplementation on high-sensitivity C-reactive protein, serum adiponectin, and lipid profile in patients with type 2 diabetes: A randomized, double-blind, placebo-controlled trial. *Phytotherapy Research*, 33, 1374–1383.
- Ahangarpour, A., Afshari, G., Mard, S. A., Khodadadi, A., & Hashemitabar, M. (2016). Preventive effects of procyanidin A2 on glucose homeostasis, pancreatic and duodenal homeobox 1, and glucose transporter 2 gene expression disturbance induced by bisphenol A in male mice. *Journal of Physiology and Pharmacology: An Official Journal of the Polish Physiological Society*, 67, 243–252.
- Aldakinah, A. A., Al-Shorbagy, M. Y., Abdallah, D. M., & El-Abhar, H. S. (2017). Trigonelline and vildagliptin antidiabetic effect: Improvement of insulin signalling pathway. *Journal of Pharmacy and Pharmacology*, 69, 856–864.
- Al-Ishaq, R. K., Abotaleb, M., Kubatka, P., Kajo, K., & Büsselberg, D. (2019). Flavonoids and their anti-diabetic effects: Cellular mechanisms and effects to improve blood sugar levels. *Biomolecules*, 9, E430.
- Alkhalidi, H., Moore, W., Wang, A., Luo, J., McMillan, R. P., Wang, Y., ... Liu, D. M. (2018). Kaempferol ameliorates hyperglycemia through suppressing hepatic gluconeogenesis and enhancing hepatic insulin sensitivity in diet-induced obese mice. *Journal of Nutritional Biochemistry*, 58, 90–101.
- Alonso-Castro, A. J., Miranda-Torres, A. C., González-Chávez, M. M., & Salazar-Olivo, L. A. (2008). Cecropia obtusifolia Bertol and its active compound, chlorogenic acid, stimulate 2-NBDglucose uptake in both insulin-sensitive and insulin-resistant 3T3 adipocytes. *Journal of Ethnopharmacology*, 120, 458–464.
- Andrade, J. M., Araújo, A. F., de Oliveira, M. V., Martins, A. M., Neto, J. F., Guimarães, A. L., ... Santos, S. H. (2014). Resveratrol attenuates hepatic steatosis in high-fat fed mice by decreasing lipogenesis and inflammation. *Nutrition*, 30, 915–919.
- Anhê, F. F., Roy, D., Pilon, G., Dudonné, S., Matamoros, S., Varin, T. V., & Marette, A. (2015). A polyphenol-rich cranberry extract protects from diet-induced obesity, insulin resistance and intestinal inflammation in association with increased Akkermansia spp. population in the gut microbiota of mice. *Gut*, 64, 872–883.
- Aragones, G., Suarez, M., Ardid-Ruiz, A., Vinaixa, M., Rodriguez, M. A., Correig, X., ... Bladé, C. (2016). Dietary proanthocyanidins boost hepatic NAD(+) metabolism and SIRT1 expression and activity in a dose-dependent manner in healthy rats. *Scientific Reports*, 6, 24977.
- Arion, W. J., Canfield, W. K., Ramos, F. C., Schindler, P. W., Burger, H. J., Hemmerle, H., ... Herling, A. W. (1997). Chlorogenic acid and hydroxynitrobenzaldehyde: New inhibitors of hepatic glucose 6-phosphatase. *Archives of Biochemistry and Biophysics*, 339, 315–322.
- Ashida, H., Furuyashiki, T., Nagayasu, H., Bessho, H., Sakakibara, H., Hashimoto, T., & Kanazawa, K. (2004). Anti-obesity actions of green tea: Possible involvements in modulation of the glucose uptake system and suppression of the adipogenesis-related transcription factors. *Biofactors*, 22, 135–140.
- Atanasov, A. G., Waltenberger, B., Pferschy-Wenzig, E. M., Linder, T., Wawrosch, C., Uhrin, P., ... Stuppner, H. (2015). Discovery and resupply of pharmacologically active plant-derived natural products: A review. *Biotechnology Advances*, 33, 1582–1614.
- Bagul, P. K., Deepthi, N., Sultana, R., & Banerjee, S. K. (2015). Resveratrol ameliorates cardiac oxidative stress in diabetes through deacetylation of NFκB-p65 and histone 3. *Journal of Nutritional Biochemistry*, 26, 1298–1307.
- Bahmanzadeh, M., Goodarzi, M. T., Rezaei, F. A., Fathi, N., & Alizadeh, Z. (2019). Resveratrol supplementation improves DNA integrity and sperm parameters in streptozotocin-nicotinamide-induced type 2 diabetic rats. *Andrologia*, 51(8), e13313.
- Baiges, I., Palmfeldt, J., Bladé, C., Gregersen, N., & Arola, L. (2010). Lipogenesis is decreased by grape seed proanthocyanidins according to liver proteomics of rats fed a high fat diet. *Molecular & Cellular Proteomics: MCP*, 9(7), 1499–1513.
- Balzer, J., Rassaf, T., Heiss, C., Kleinbongard, P., Lauer, T., Merx, M., ... Kelm, M. (2008). Sustained benefits in vascular function through flavanol-containing cocoa in medicated diabetic patients a double-masked, randomized, controlled trial. *Journal of the American College of Cardiology*, 51, 2141–2149.
- Bang, C. Y., & Choung, S. Y. (2014). Enzogenol improves diabetes-related metabolic change in C57BL/KsJ-db/db mice, a model of type 2 diabetes mellitus. *Journal of Pharmacy and Pharmacology*, 66, 875–885.
- Bassoli, B. K., Cassolla, P., Borba-Murad, G. R., Constantin, J., Salgueiro-Pagadigorria, C. L., Bazotte, R. B., & de Souza, H. M. (2015). Instant coffee extract with high chlorogenic acids content inhibits hepatic G-6-Pase in vitro, but does not reduce the glycaemia. *Cell Biochemistry and Function*, 33(4), 183–187. <https://doi.org/10.1002/cbf.3099>.
- Bezerra, R. M. N., Veiga, L. F., Caetano, A. C., Rosalen, P. L., Amaral, M. E. C., Palanch, A. C., & de Alencar, S. M. (2012). Caffeic acid phenethyl ester reduces the activation of the nuclear factor κB pathway by high-fat diet-induced obesity in mice. *Metabolism*, 61(11), 1606–1614.
- Bhakkialakshmi, E., Shalini, D., Sekar, T. V., Rajaguru, P., Paulmurugan, R., & Ramkumar, K. M. (2014). Therapeutic potential of nrfostilbene against pancreatic beta-cell apoptosis mediated through Nrf2. *British Journal of Pharmacology*, 171, 1747–1757.
- Bhandarkar, N. S., Brown, L., & Panchal, S. K. (2019). Chlorogenic acid attenuates high-carbohydrate, high-fat diet-induced cardiovascular, liver, and metabolic changes in rats. *Nutrition Research*, 62, 78–88.
- Bhatt, J. K., Thomas, S., & Nanjan, M. J. (2012). Resveratrol supplementation improves glycemic control in type 2 diabetes mellitus. *Nutrition Research*, 32(7), 537–541.
- Bhattarai, G., Min, C. K., Jeon, Y. M., Bashyal, R., Poudel, S. B., Kook, S. H., & Lee, J. C. (2019). Oral supplementation with p-coumaric acid protects mice against diabetes-associated spontaneous destruction of periodontal tissue. *Journal of Periodontal Research*, 54(6), 690–701.
- Bialonska, D., Ramnani, P., Kasimsetty, S. G., Muntha, K. R., Gibson, G. R., & Ferreira, D. (2010). The influence of pomegranate by-product and punicalagins on selected groups of human intestinal microbiota. *International Journal of Food Microbiology*, 140, 175–182.
- Blandino, G., Inturri, R., Lazzara, F., Di Rosa, M., & Malaguarnera, L. (2016). Impact of gut microbiota on diabetes mellitus. *Diabetes & Metabolism*, 42, 303–315.
- Bo, S., Ponzio, V., Ciccone, G., Evangelista, A., Saba, F., Goitre, I., ... Gambino, R. (2016). Six months of resveratrol supplementation has no measurable effect in type 2 diabetic patients. A randomized, double blind, placebo-controlled trial. *Pharmacological Research*, 111, 896–905.
- Bozzetto, L., Annuzzi, G., Pacini, G., Costabile, G., Vetrani, C., Vitale, M., ... Rivellese, A. A. (2015). Polyphenol-rich diets improve glucose metabolism in people at high cardiometabolic risk: A controlled randomised intervention trial. *Diabetologia*, 58, 1551–1560.
- Brasnyo, P., Molnar, G. A., Mohas, M., Marko, L., Laczy, B., Cseh, J., ... Wittmann, I. (2011). Resveratrol improves insulin sensitivity, reduces oxidative stress and activates the Akt pathway in type 2 diabetic patients. *The British Journal of Nutrition*, 106(3), 383–389.
- Burns, J., Yokota, T., Ashihara, H., Lean, M. E. J., & Crozier, A. (2002). Plant foods and herbal sources of resveratrol. *Journal of Agricultural and Food Chemistry*, 50, 3337–3340.
- Cao, H., Chen, X. Q., Jassbi, A. R., & Xiao, J. B. (2015). Microbial biotransformation of bioactive flavonoids. *Biotechnology Advances*, 33, 214–223.
- Cardona, F., Andrés-Lacueva, C., Tulipani, S., Tinahones, F. J., & Queipo-Ortuño, M. I. (2013). Benefits of polyphenols on gut microbiota and implications in human health. *The Journal of Nutritional Biochemistry*, 24(8), 1415–1422.
- Celik, S., Erdogan, S., & Tuzcu, M. (2009). Caffeic acid phenethyl ester (CAPE) exhibits significant potential as an antidiabetic and liver-protective

- agent in streptozotocin-induced diabetic rats. *Pharmacological Research*, 60(4), 270–276.
- Chen, J., Mangelinckx, S., Ma, L., Wang, Z., Li, W., & De Kimpe, N. (2014). Caffeoylquinic acid derivatives isolated from the aerial parts of *Gynura divaricata* and their yeast  $\alpha$ -glucosidase and PTP1B inhibitory activity. *Fitoterapia*, 99, 1–6.
- Chen, L. L., Zhang, H. H., Zheng, J., Hu, X., Kong, W., Hu, D., ... Zhang, P. (2011). Resveratrol attenuates high-fat diet-induced insulin resistance by influencing skeletal muscle lipid transport and subsarcolemmal mitochondrial  $\beta$ -oxidation. *Metabolism: Clinical and Experimental*, 60, 1598–1609.
- Chen, L., Chen, L., Wang, T., Yuan, P., Chen, K., Jia, Q., ... Li, Y. (2016). Preparation of methylated products of A-type procyanidin trimers in cinnamon bark and their protective effects on pancreatic  $\beta$ cell. *Journal of Food Science*, 81, C1062–C1069.
- Chen, L., Sun, P., Wang, T., Chen, K., Jia, Q., Wang, H., & Li, Y. (2012). Diverse mechanisms of antidiabetic effects of the different procyanidin oligomer types of two different cinnamon species on db/db mice. *Journal of Agricultural and Food Chemistry*, 60(36), 9144–9150.
- Chen, T. Y., Ferruzzi, M. G., Wu, Q. L., Simon, J. E., Talcott, S. T., Wang, J., ... Janle, E. M. (2017). Influence of diabetes on plasma pharmacokinetics and brain bioavailability of grape polyphenols and their phase II metabolites in the Zucker diabetic fatty rat. *Molecular Nutrition & Food Research*, 61, 1700111.
- Chen, X., Wang, L., Fan, S., Song, S., Min, H., Wu, Y., ... Gao, Q. (2018). Puerarin acts on the skeletal muscle to improve insulin sensitivity in diabetic rats involving  $\mu$ -opioid receptor. *European Journal of Pharmacology*, 818, 115–123.
- Chen, X., Yu, J., & Shi, J. (2018). Management of Diabetes mellitus with puerarin, a natural isoflavone from *Pueraria lobata*. *American Journal of Chinese Medicine*, 46(8), 1771–1789.
- Cheng, M., Gao, H. Q., Xu, L., Li, B. Y., Zhang, H., & Li, X. H. (2007). Cardioprotective effects of grape seed proanthocyanidins extracts in streptozotocin induced diabetic rats. *Journal of Cardiovascular Pharmacology*, 50, 503–509.
- Cheong, S. H., Furuhashi, K., Ito, K., Nagaoka, M., Yonezawa, T., Miura, Y., & Yagasaki, K. (2014). Daidzein promotes glucose uptake through glucose transporter 4 translocation to plasma membrane in L6 myocytes and improves glucose homeostasis in Type 2 diabetic model mice. *Journal of Nutritional Biochemistry*, 25(2), 136–1343.
- Chi, T. C., Chen, W. P., Chi, T. L., Kuo, T. F., Lee, S. S., Cheng, J. T., & Su, M. T. (2007). Phosphatidylinositol-3-kinase is involved in the antihyperglycemic effect induced by resveratrol in streptozotocin-induced diabetic rats. *Life Sciences*, 80, 1713–1720.
- Chiva-Blanch, G., Urpi-Sarda, M., Ros, E., Valderas-Martinez, P., Casas, R., Arranz, S., ... Estruch, R. (2013). Effects of red wine polyphenols and alcohol on glucose metabolism and the lipid profile: A randomized clinical trial. *Clinical Nutrition*, 32, 200–206.
- Choudhury, H., Pandey, M., Hua, C. K., Mun, C. S., Jing, J. K., Kong, L., ... Kesharwani, P. (2018). An update on natural compounds in the remedy of diabetes mellitus: A systematic review. *Journal of Traditional and Complementary Medicine*, 8(3), 361–376.
- Chuengsamarn, S., Rattanamongkolgul, S., Luechapudiporn, R., Phisalaphong, C., & Jirawatnotai, S. (2012). Curcumin extract for prevention of type 2 diabetes. *Diabetes Care*, 35(11), 2121–2127.
- Chundi, V., Challa, S. R., Garikapati, D. R., Juvva, G., Jampani, A., Pinnamneni, S. H., & Venigalla, S. (2016). Biochanin-A attenuates neuropathic pain in diabetic rats. *J Journal of Ayurveda and Integrative Medicine*, 7, 231–237.
- Clifford, M. N. (2000). Chlorogenic acids and other cinnamates – nature, occurrence, dietary burden, absorption and metabolism. *Journal of the Science of Food and Agriculture*, 80, 1033–1043.
- Clifford, M. N., Jaganath, I. B., Ludwig, I. A., & Crozier, A. (2017). Chlorogenic acids and the acyl-quinic acids: Discovery, biosynthesis, bioavailability and bioactivity. *Natural Product Reports*, 34(12), 1391–1421. <https://doi.org/10.1039/c7np00030h>
- Cordero-Herrera, I., Martin, M. A., Bravo, L., Goya, L., & Ramos, S. (2013). Cocoa flavonoids improve insulin signalling and modulate glucose production via AKT and AMPK in HepG2 cells. *Molecular Nutrition & Food Research*, 57, 974–985.
- Cremonini, E., Bettaieb, A., Haj, F. G., Fraga, C. G., & Oteiza, P. I. (2016). (-)-Epicatechin improves insulin sensitivity in high fat diet-fed mice. *Archives of Biochemistry and Biophysics*, 599, 13–21.
- Cy, C., Mc, M., Kc, C., & Mc, Y. (2010). Anti-glycative and anti-inflammatory effects of caffeic acid and ellagic acid in kidney of diabetic mice. *Molecular Nutrition & Food Research*, 54(3), 388–395.
- Das, D., Sarkar, S., Bordoloi, J., Wann, S. B., Kalita, J., & Manna, P. (2018). Daidzein, its effects on impaired glucose and lipid metabolism and vascular inflammation associated with type 2 diabetes. *Biofactors*, 44, 407–417.
- Delzenne, N. M., Cani, P. D., Everard, A., Neyrinck, A. M., & Bindels, L. B. (2015). Gut microorganisms as promising targets for the management of type 2 diabetes. *Diabetologia*, 58, 2206–2217.
- Den Hartogh, D. J., & Tsiani, E. (2019). Antidiabetic properties of naringenin: A citrus fruit polyphenol. *Biomolecules*, 9, 99.
- Deng, J. Y., Hsieh, P. S., Huang, J. P., Lu, L. S., & Hung, L. M. (2008). Activation of estrogen receptor is crucial for resveratrol-stimulating muscular glucose uptake via both insulin-dependent and -independent pathways. *Diabetes*, 57, 1814–1823.
- Ding, Y., Dai, X., Jiang, Y., Zhang, Z., & Li, Y. (2014). Functional and morphological effects of grape seed proanthocyanidins on peripheral neuropathy in rats with type 2 diabetes mellitus. *Phytotherapy Research*, 28, 1082–1087.
- Ding, Y., Dai, X., Zhang, Z., Jiang, Y., Ma, X., Cai, X., & Li, Y. (2014). Proanthocyanidins protect against early diabetic peripheral neuropathy by modulating endoplasmic reticulum stress. *Journal of Nutritional Biochemistry*, 25, 765–772.
- Do, G. M., Jung, U. J., Park, H. J., Kwon, E. H., Jeon, S. M., McGregor, R. A., & Choi, M. S. (2012). Resveratrol ameliorates diabetes-related metabolic changes via activation of AMP-activated protein kinase and its downstream targets in db/db mice. *Molecular Nutrition and Food Research*, 56, 1282–1291.
- Dong, H., Wang, N., Zhao, L., & Lu, F. (2012). Berberine in the treatment of type 2 diabetes mellitus: A systemic review and meta-analysis. *Evidence-Based Complementary and Alternative Medicine: ECAM*, 2012, 591654.
- Eid, H. M., Thong, F., Sweeney, G., & Haddad, P. S. (2012). Caffeic acid methyl and ethyl esters induce the translocation of glucose transporter GLUT4 in cultured skeletal muscle cells. *Planta Medica*, 78, D121.
- Elango, B., Dornadula, S., Paulmurugan, R., & Ramkumar, K. M. (2016). Pterostilbene ameliorates streptozotocin-induced diabetes through enhancing antioxidant signaling pathways mediated by Nrf2. *Chemical Research in Toxicology*, 29, 47–57.
- Eleftheriou, P., Geronikaki, A., & Petrou, A. (2019). PTP1b inhibition, a promising approach for the treatment of diabetes type II. *Current Topics in Medicinal Chemistry*, 19(4), 246–263.
- El-Sayed, el-S. M., Mansour, A. M., & Nady, M. E. (2015). Protective effects of pterostilbene against acetaminophen-induced hepatotoxicity in rats. *Journal of Biochemical and Molecular Toxicology*, 29, 35–42.
- Evans, J. L., Goldfine, I. D., Maddux, B. A., & Grodsky, G. M. (2003). Are oxidative stress-activated signaling pathways mediators of insulin resistance and beta-cell dysfunction? *Diabetes*, 52, 1–8.
- Everard, A., Belzer, C., Geurts, L., Ouwerkerk, J. P., Druart, C., Bindels, L. B., ... De Vos, W. M. (2013). Cross-talk between Akkermansia muciniphila and intestinal epithelium controls diet-induced obesity. *Proceedings of the National Academy of Sciences*, 110, 9066–9071.
- Everard, A., & Cani, P. D. (2013). Diabetes, obesity and gut microbiota. *Best Practice & Research Clinical Gastroenterology*, 27, 73–83.
- Faid, I., Al-Hussaini, H., & Kilarkaje, N. (2015). Resveratrol alleviates diabetes-induced testicular dysfunction by inhibiting oxidative stress

- and c-Jun N-terminal kinase signaling in rats. *Toxicology and Applied Pharmacology*, 289, 482–494.
- Faraji, H. (2018). Effect of decaffeinated coffee-enriched chlorogenic acid on blood glucose levels in healthy controls: A systematic review. *International Journal of Preventive Medicine*, 9, 112.
- Fernández-Millán, E., Ramos, S., Alvarez, C., Bravo, L., Goya, L., & Martín, M. Á. (2014). Microbial phenolic metabolites improve glucose-stimulated insulin secretion and protect pancreatic beta cells against tert-butyl hydroperoxide-induced toxicity via ERKs and PKC pathways. *Food and Chemical Toxicology*, 66, 245–253.
- Fu, Z., Gilbert, E. R., Pfeiffer, L., Zhang, Y., Fu, Y., & Liu, D. (2012). Genistein ameliorates hyperglycemia in a mouse model of nongenetic type 2 diabetes. *Applied Physiology, Nutrition and Metabolism*, 37, 480–488.
- Fukino, Y., Ikeda, A., Maruyama, K., Aoki, N., Okubo, T., & Iso, H. (2008). Randomized controlled trial for an effect of green tea-extract powder supplementation on glucose abnormalities. *European Journal of Clinical Nutrition*, 62(8), 953–960.
- Fukuda, T., Fukui, M., Tanaka, M., Senmaru, T., Iwase, H., Yamazaki, M., ... Marunaka, Y. (2015). Effect of Brazilian green propolis in patients with type 2 diabetes: A double-blind randomized placebo-controlled study. *Biomedical Reports*, 3, 355–360.
- Fuller, S., & Stephen, J. M. (2015). Diosgenin, 4-hydroxyisoleucine, and fiber from Fenugreek: Mechanisms of actions and potential effects on metabolic syndrome. *Advances in Nutrition*, 6, 189–197.
- Gilbert, E. R., & Liu, D. (2013). Anti-diabetic functions of soy isoflavone genistein: Mechanisms underlying its effects on pancreatic  $\beta$ -cell function. *Food & Function*, 4(2), 200–212.
- Gin, H., Rigalleau, V., Caubet, O., Masquelier, J., & Aubertin, J. (1999). Effects of red wine, tannic acid, or ethanol on glucose tolerance in non-insulin-dependent diabetic patients and on starch digestibility in vitro. *Metabolism*, 48, 1179–1183.
- Gocmez, S. S., Şahin, T. D., Yazir, Y., Duruksu, G., Eraldemir, F. C., Polat, S., & Utkan, T. (2019). Resveratrol prevents cognitive deficits by attenuating oxidative damage and inflammation in rat model of streptozotocin diabetes induced vascular dementia. *Physiology & Behavior*, 201, 198–207.
- Goh, K. P.; Lee, H. Y.; Lau, D. P.; Supaat, W.; Chan, Y. H., & Koh, A. F. (2014). Effects of resveratrol in patients with type 2 diabetes mellitus on skeletal muscle SIRT1 expression and energy expenditure. *International Journal of Sport Nutrition and Exercise Metabolism*, 24, 2–13.
- Gómez-Zorita, S., Fernandez-Quintela, A., Aguirre, L., Macarulla, M., Rimando, A., & Portillo, M. (2015). Pterostilbene improves glycaemic control in rats fed an obesogenic diet: Involvement of skeletal muscle and liver. *Food & Function*, 6, 1968–1976.
- Gonzalez-Abuin, N., Pinent, M., Casanova-Martí, A., Arola, L., Blay, M., & Ardevol, A. (2015). Procyanidins and their healthy protective effects against type 2 diabetes. *Current Medicinal Chemistry*, 22, 39–50.
- Govindaraj, J., & Sorimuthu, P. S. (2015). Rosmarinic acid modulates the antioxidant status and protects pancreatic tissues from glucolipotoxicity mediated oxidative stress in high-fat diet: Streptozotocin-induced diabetic rats. *Molecular and Cellular Biochemistry*, 404(1-2), 143–159.
- Gowd, V., Karim, N., Shishir, M. R. I., Xie, L. H., & Chen, W. (2019). Dietary polyphenols to combat the metabolic diseases via altering gut microbiota. *Trends in Food Science & Technology*, 93, 81–93.
- Guo, H. H., Guo, J. B., Jiang, X. W., Li, Z., & Ling, W. H. (2012). Cyanidin-3-O-beta-glucoside, a typical anthocyanin, exhibits antilipolytic effects in 3T3-L1 adipocytes during hyperglycemia: Involvement of FoxO1-mediated transcription of adipose triglyceride lipase. *Food and Chemical Toxicology*, 50, 3040–3047.
- Guo, H. H., Xia, M., Zou, T., Ling, W., Zhong, R., & Zhang, W. (2012). Cyanidin 3-glucoside attenuates obesity-associated insulin resistance and hepatic steatosis in high-fat diet-fed and db/db mice via the transcription factor FoxO1. *Journal of Nutritional Biochemistry*, 23, 349–360.
- Gupta, S. K., Dongare, S., Mathur, R., Mohanty, I. R., Srivastava, S., Mathur, S., & Nag, T. C. (2015). Genistein ameliorates cardiac inflammation and oxidative stress in streptozotocin-induced diabetic cardiomyopathy in rats. *Molecular and Cellular Biochemistry*, 408, 63–72.
- Hao, J., Chen, C., Huang, K., Huang, J., Li, J., Liu, P., & Huang, H. (2014). Polydatin improves glucose and lipid metabolism in experimental diabetes through activating the Akt signaling pathway. *European Journal of Pharmacology*, 745, 152–165.
- Harini, R., Ezhumalai, M., & Pugalendi, K. V. (2012). Antihyperglycemic effect of biochanin A, a soy isoflavone, on streptozotocin-diabetic rats. *European Journal of Pharmacology*, 676(1-3), 89–94.
- Hasanein, P., & Mahtaj, A. K. (2015). Ameliorative effect of rosmarinic acid on scopolamine-induced memory impairment in rats. *Neuroscience Letters*, 585, 23–27.
- Hasanein, P., & Mohammad, Z. L. (2014). Effects of rosmarinic acid on an experimental model of painful diabetic neuropathy in rats. *Pharmaceutical Biology*, 52(11), 1398–1402.
- Hemmerle, H., Burger, H. J., Below, P., Schubert, G., Rippel, R., Schindler, P. W., ... Herling, A. W. (1997). Chlorogenic acid and synthetic chlorogenic acid derivatives: Novel inhibitors of hepatic glucose-6-phosphate translocase. *Journal of Medicinal Chemistry*, 40(2), 137–145.
- Henry-Vitrac, C., Ibarra, A., Roller, M., Méridon, J. M., & Vitrac, X. (2010). Contribution of chlorogenic acids to the inhibition of human hepatic glucose-6-phosphatase activity in vitro by Svetol, a standardized decaffeinated green coffee extract. *Journal of Agricultural and Food Chemistry*, 58, 4141–4144.
- Ho, G. T., Kase, E. T., Wangenstein, H., & Barsett, H. (2017). Phenolic elderberry extracts, anthocyanins, procyanidins, and metabolites influence glucose and fatty acid uptake in human skeletal muscle cells. *Journal of Agricultural and Food Chemistry*, 65, 2677–2685.
- Hodaie, H., Adibian, M., Nikpayam, O., Hedayati, M., & Sohrab, G. (2019). The effect of curcumin supplementation on anthropometric indices, insulin resistance and oxidative stress in patients with type 2 diabetes: A randomized, double-blind clinical trial. *Diabetology & Metabolic Syndrome*, 11, 41.
- Hoffmann, T., Krug, D., Bozkurt, N., Duddela, S., Jansen, R., Garcia, R., ... Müller, R. (2018). Correlating chemical diversity with taxonomic distance for discovery of natural products in myxobacteria. *Nature Communications*, 9(1), 803.
- Hong, B. N., Nam, Y. H., Woo, S. H., & Kang, T. H. (2017). Chlorogenic acid rescues sensorineural auditory function in a diabetic animal model. *Neuroscience Letters*, 640, 64–69.
- Hosoyama, H., Sugimoto, A., Suzuki, Y., Sakane, I., & Kakuda, T. (2003). Isolation and quantitative analysis of the  $\alpha$ -amylase inhibitor in *Lagerstroemia speciosa* (L.) Pers. (Banaba). *Yakugaku Zasshi*, 123, 599–605.
- Hsu, C. H., Liao, Y. L., Lin, S. C., Tsai, T. H., Huang, C. J., & Chou, P. (2011). Does supplementation with green tea extract improve insulin resistance in obese type 2 diabetics? A randomized, double-blind, and placebo-controlled clinical trial. *Alternative Medicine Review: A Journal of Clinical Therapeutic*, 16(2), 157–163.
- Hu, Z., Shi, W., Chen, B., Zou, P., & Li, X. (2018). Grape seed proanthocyanidins protect against streptozotocin-induced diabetic nephropathy by attenuating endoplasmic reticulum stress-induced apoptosis. *Molecular Medicine Reports*, 18, 1447–1454.
- Huang, G., Xu, J., & Guo, T. L. (2019). Isoflavone daidzein regulates immune responses in the B6C3F1 and non-obese diabetic (NOD) mice. *International Immunopharmacology*, 71, 277–284.
- Hussain, S. A., Ahmed, Z. A., Mahwi, T. O., & Aziz, T. A. (2012). Quercetin dampens postprandial hyperglycemia in type 2 diabetic patients challenged with carbohydrates load. *International Journal of Diabetes Research*, 1, 32–35.
- Igarashi, K., Takahashi, M., & Sato, M. (2017). Vegetable soup produced by mixing steamed sweet potato with rice malt and component chlorogenic acid ameliorate diabetes in  $kk^{-a.su.p}$  mice. *Current Topics in Nutritional Research*, 15, 151–161.
- Ikarashi, N., Toda, T., Okaniwa, T., Ito, K., Ochiai, W., & Sugiyama, K. (2011). Anti-obesity and anti-diabetic effects of acacia polyphenol in obese

- diabetic KKAY mice fed high-fat diet. *Evidence-Based Complementary and Alternative Medicine*, 2011, 952031.
- Jin, M., Shen, M. H., Jin, M. H., Jin, A. H., Yin, X. Z., & Quan, J. S. (2018). Hypoglycemic property of soy isoflavones from hypocotyl in Goto-Kakizaki diabetic rats. *Journal of Clinical Biochemistry and Nutrition*, 62, 148–154.
- Jin, S., Chang, C., Zhang, L., Liu, Y., Huang, X., & Chen, Z. (2015). Chlorogenic acid improves late diabetes through adiponectin receptor signaling pathways in db/db mice. *PLoS ONE*, 10, e0120842.
- Jin, T., Song, Z., Weng, J., & Fantus, I. G. (2018). Curcumin and other dietary polyphenols: Potential mechanisms of metabolic actions and therapy for diabetes and obesity. *American Journal of Physiology: Endocrinology and Metabolism*, 314, E201–E205.
- Johnson, M. H., & de Mejia, E. G. (2016). Phenolic compounds from fermented berry beverages modulated gene and protein expression to increase insulin secretion from pancreatic beta-cells in vitro. *Journal of Agricultural and Food Chemistry*, 64, 2569–2581.
- Johnson, M. H., de Mejia, E. G., Fan, J., Lila, M. A., & Yousef, G. G. (2013). Anthocyanins and proanthocyanidins from blueberry-blackberry fermented beverages inhibit markers of inflammation in macrophages and carbohydrate-utilizing enzymes in vitro. *Molecular Nutrition & Food Research*, 57, 1182–1197.
- Jung, E. H., Kim, S. R., Hwang, I. K., & Ha, T. Y. (2007). Hypoglycemic effects of a phenolic acid fraction of rice bran and ferulic acid in C57BL/KsJ-db/db mice. *Journal of Agricultural and Food Chemistry*, 55, 9800–9804.
- Jung, U. J., Lee, M. K., Park, Y. B., Jeon, S. M., & Choi, M. S. (2006). Antihyperglycemic and antioxidant properties of caffeic acid in db/db mice. *Journal of Pharmacology and Experimental Therapeutics*, 318, 476–483.
- Kähkönen, M. P., & Heinonen, M. (2003). Antioxidant activity of anthocyanins and their aglycons. *Journal of Agricultural and Food Chemistry*, 51, 628–633.
- Kamiyama, O., Sanae, F., Ikeda, K., Higashi, Y., Minami, Y., & Asano, N. (2010). In vitro inhibition of  $\alpha$ -glucosidases and glycogen phosphorylase by catechin gallates in green tea. *Food Chemistry*, 122, 1061–1066.
- Kar, P., Laight, D., Rooprai, H. K., Shaw, K. M., & Cummings, M. (2009). Effects of grape seed extract in Type 2 diabetic subjects at high cardiovascular risk: A double blind randomized placebo controlled trial examining metabolic markers, vascular tone, inflammation, oxidative stress and insulin sensitivity. *Diabetic Medicine*, 26, 526–531.
- Kasetti, R. B., Nabi, S. A., Swapna, S., & Apparao, C. (2012). Cinnamic acid as one of the anti-diabetic active principle(s) from the seeds of *Syzygium alternifolium*. *Food and Chemical Toxicology*, 50, 1425–1431.
- Kato, C. G., Gonçalves, G. de A., Peralta, R. A., Seixas, F. A. V., de Sá-Nakanishi, A. B., Bracht, L., ... Peralta, R. M. (2017). Inhibition of  $\alpha$ -amylases by condensed and hydrolysable tannins: Focus on kinetics and hypoglycemic actions. *Enzyme Research*, 2017, 5724902. <https://doi.org/10.1155/2017/5724902>.
- Kato, M., Tani, T., Terahara, N., & Tsuda, T. (2015). The anthocyanin delphinidin 3-rutinoside stimulates glucagon-like peptide-1 secretion in murine GLUTag cell line via the Ca<sup>2+</sup>/calmodulin-dependent kinase II pathway. *PLoS ONE*, 10(5), e0126157.
- Khaki, A., Imani, S. A., & Golzar, F. S. (2012). Effects of rosmarinic acid on male sex hormones (testosterone-FSH-LH) and testis tissue apoptosis after exposure to electromagnetic field (EMF) in rats. *African Journal of Pharmacy and Pharmacology*, 6, 248–252.
- Khan, A., Safdar, M., Khan, A. M. M., Khattak, K. N., & Anderson, R. A. (2003). Cinnamon improves glucose and lipids of people with type 2 diabetes. *Diabetes Care*, 26, 3215–3218.
- Khan, N., & Mukhtar, H. (2018). Tea polyphenols in promotion of human health. *Nutrients*, 11, E39.
- Kianbakht, S., Abasi, B., & Dabaghian, F. H. (2013). Anti-hyperglycemic effect of *Vaccinium arctostaphylos* in type 2 diabetic patients: A randomized controlled trial. *Forsch Komplementmed*, 20, 17–22.
- Kim, J. J., Tan, Y., Xiao, L., Sun, Y. L., & Qu, X. (2013). Green tea polyphenol epigallocatechin-3-gallate enhance glycogen synthesis and inhibit lipogenesis in hepatocytes. *BioMed Research International*, 2013, 920128.
- Klinder, A., Shen, Q., Heppel, S., Lovegrove, J. A., Rowland, I., & Tuohy, K. M. (2016). Impact of increasing fruit and vegetables and flavonoid intake on the human gut microbiota. *Food & Function*, 7, 1788–1796.
- Kobayashi, Y., Suzuki, M., Satsu, H., Arai, S., Hara, Y., Suzuki, K., ... Shimizu, M. (2000). Green tea polyphenols inhibit the sodium-dependent glucose transporter of intestinal epithelial cells by a competitive mechanism. *Journal of Agricultural and Food Chemistry*, 48, 5618–5623.
- Kondratyuk, T. P., & Pezzuto, J. M. (2004). Natural product polyphenols of relevance to human health. *Pharmaceutical Biology*, 42, 46–63.
- Konishi, K., Wada, K., Yamakawa, M., Goto, Y., Mizuta, F., Koda, S., ... Nagata, C. (2019). Dietary soy intake is inversely associated with risk of type 2 diabetes in Japanese women but not in men. *Journal of Nutrition*, 149(7), 1208–1214.
- Kosuru, R., Kandula, V., Rai, U., Prakash, S., Xia, Z., & Singh, S. (2018). Pterostilbene decreases cardiac oxidative stress and inflammation via activation of AMPK/Nrf2/HO-1 pathway in fructose-fed diabetic rats. *Cardiovascular Drugs and Therapy*, 32(2), 147–163.
- Kosuru, R., & Singh, S. (2017). Pterostilbene ameliorates insulin sensitivity, glycemic control and oxidative stress in fructose-fed diabetic rats. *Life Sciences*, 182, 112–121.
- Ku, C. R., Lee, H. J., Kim, S. K., Lee, E. Y., Lee, M. K., & Lee, E. J. (2012). Resveratrol prevents streptozotocin-induced diabetes by inhibiting the apoptosis of pancreatic  $\beta$ -cell and the cleavage of poly (ADP-ribose) polymerase. *Endocrine Journal*, 59, 103–109.
- Kurimoto, Y., Shibayama, Y., Inoue, S., Soga, M., Takikawa, M., Ito, C., ... Tsuda, T. (2013). Black soybean seed coat extract ameliorates hyperglycemia and insulin sensitivity via the activation of AMP-activated protein kinase in diabetic mice. *Journal of Agricultural and Food Chemistry*, 61, 5558–5564.
- Lafay, S., Morand, C., Manach, C., Besson, C., & Scalbert, A. (2006). Absorption and metabolism of caffeic acid and chlorogenic acid in the small intestine of rats. *British Journal of Nutrition*, 96, 39–46.
- Larsen, N., Vogensen, F. K., Van Den Berg, F. W., Nielsen, D. S., Andreasen, A. S., Pedersen, B. K., ... Jakobsen, M. (2010). Gut microbiota in human adults with type 2 diabetes differs from non-diabetic adults. *PLoS ONE*, 5, e9085.
- Lecoultrre, V., Carrel, G., Egli, L., Binnert, C., Boss, A., MacMillan, E. L., ... Tappy, L. (2014). Coffee consumption attenuates short-term fructose-induced liver insulin resistance in healthy men. *American Journal of Clinical Nutrition*, 99, 268–275.
- Lee, J., Durst, R. W., & Wrolstad, R. E. (2005). Determination of total monomeric anthocyanin pigment content of fruit juices, beverages, natural colorants, and wines by the pH differential method: Collaborative study. *Journal of AOAC International*, 88, 1269–1278.
- Lee, K. H., Park, E., Lee, H. J., Kim, M. O., Cha, Y. J., Kim, J. M., ... Shin, M. J. (2011). Effects of daily quercetin-rich supplementation on cardiometabolic risks in male smokers. *Nutrition Research and Practice*, 5, 28–33.
- Lee, Y. A., Cho, E. J., Tanaka, T., & Yokozawa, T. (2007). Inhibitory activities of proanthocyanidins from persimmon against oxidative stress and digestive enzymes related to diabetes. *Journal of Nutritional Science and Vitaminology*, 53, 287–292.
- Li, F., Gao, C., Yan, P., Zhang, M., Wang, Y., Hu, Y., ... Sheng, J. (2018). EGCG reduces obesity and white adipose tissue gain partly through AMPK activation in mice. *Frontiers in Pharmacology*, 9, 1366.
- Li, J. W. H., & Vederas, J. C. (2009). Drug discovery and natural products: End of an era or an endless frontier? *Science*, 325, 161–165.
- Li, X., Li, S., Chen, M., Wang, J., Xie, B., & Sun, Z. (2018). (-)-Epigallocatechin-3-gallate (EGCG) inhibits starch digestion and improves glucose homeostasis through direct or indirect activation of PXR/CAR-mediated phase II metabolism in diabetic mice. *Food & Function*, 9, 4651–4663.
- Li, Y., Zhao, S., Zhang, W., Zhao, P., He, B., Wu, N., & Han, P. (2011). Epigallocatechin-3-O-gallate (EGCG) attenuates FFAs-induced peripheral insulin resistance through AMPK pathway and insulin signaling pathway in vivo. *Diabetes Research and Clinical Practice*, 93(2), 205–214.

- Li, Y., Zheng, X., Yi, X., Liu, C., Kong, D., Zhang, J., & Gong, M. (2017). Myricetin: A potent approach for the treatment of type 2 diabetes as a natural class B GPCR agonist. *FASEB Journal*, 31(6), 2603–2611.
- Lin, G., Liu, X., Yan, X., Liu, D., Yang, C., Liu, B., ... Zhao, C. (2019). Role of green macroalgae *Enteromorpha Prolifera* polyphenols in the modulation of gene expression and intestinal microflora profiles in Type 2 diabetic mice. *International Journal of Molecular Sciences*, 20(1), 25.
- Liu, C. L., Yan, L., Cai, K. R., Sun, K., Qi, Y., Han, Y. L., ... Sun, X. D. (2018). Effects of soybean isoflavones on Wnt/ $\beta$ -catenin and the TGF- $\beta$ 1 signaling pathway in renal tissue of type 2 diabetic rats. *Journal of Biological Regulators and Homeostatic Agents*, 32(3), 455–464.
- Liu, X., Kim, J., Li, Y., Li, J., Liu, F., & Chen, X. (2005). Tannic acid stimulates glucose transport and inhibits adipocyte Differentiation in 3T3-L1 cells. *Journal of Nutrition*, 135, 165–171.
- Liu, Y. J., Zhan, J., Liu, X. L., Wang, Y., Jia, J., & He, Q. Q. (2014). Dietary flavonoids intake and risk of type 2 diabetes: A meta-analysis of prospective cohort studies. *Clinical Nutrition*, 33, 59–63.
- Liu, Y., Li, D., Zhang, Y., Sun, R., & Xia, M. (2014). Anthocyanin increases adiponectin secretion and protects against diabetes-related endothelial dysfunction. *American Journal of Physiology: Endocrinology and Metabolism*, 306, E975–988.
- Loureiro, G., & Martel, F. (2019). The effect of dietary polyphenols on intestinal absorption of glucose and fructose: Relation with obesity and type 2 diabetes. *Food Reviews International*, 35, 390–406.
- Lu, Z., Jia, Q., Wang, R., Wu, X., Wu, Y., Huang, C., & Li, Y. (2011). Hypoglycemic activities of A- and B-type procyanidin oligomer-rich extracts from different Cinnamon barks. *Phytomedicine: International Journal of Phytotherapy and Phytopharmacology*, 18(4), 298–302.
- Ma, C. M., Sato, N., Li, X. Y., Nakamura, N., & Hattori, M. (2010). Flavan-3-ol contents, anti-oxidative and  $\alpha$ -glucosidase inhibitory activities of *Cynomorium songaricum*. *Food Chemistry*, 118, 116–119.
- Martínez-López, S., Sarriá, B., Mateos, R., & Bravo-Clemente, L. (2019). Moderate consumption of a soluble green/roasted coffee rich in caffeine and quinic acids reduces cardiovascular risk markers: Results from a randomized, cross-over, controlled trial in healthy and hypercholesterolemic subjects. *European Journal of Nutrition*, 58(2), 865–1878. <https://doi.org/10.1007/s00394-018-1726-x>
- Matsui, T., Tanaka, T., Tamura, S., Tushima, A., Tamaya, K., Miyata, Y., ... Matsumoto, K. (2007).  $\alpha$ -Glucosidase inhibitory profile of catechins and theaflavins. *Journal of Agricultural and Food Chemistry*, 55(1), 99–1105.
- Mayakrishnan, T., Nakkala, J. R., Jeepipalli, S. P. K., Raja, K., Chandra, V. K., Mohan, V. K., & Sadras, S. R. (2015). Fenugreek seed extract and its phytochemicals—Trigonelline and diosgenin alleviate their hepatoprotective effects through attenuation of endoplasmic reticulum stress and oxidative stress in type 2 diabetic rats. *European Food Research and Technology*, 240, 223–232.
- Mei, X., Zhou, L., Zhang, T., Lu, B., Sheng, Y., & Ji, L. (2018). Chlorogenic acid attenuates diabetic retinopathy by reducing VEGF expression and inhibiting VEGF-mediated retinal neovascularization. *Vascular Pharmacology*, 101, 29–37.
- Meinhart, A. D., Damin, F. M., Caldeirão, L., da Silveira, T. F. F., Filho, J. T., & Godoy, H. T. (2017). Chlorogenic acid isomer contents in 100 plants commercialized in Brazil. *Food Research International*, 99(Pt 1), 522–530.
- Mellor, D. D., Madden, L. A., Smith, K. A., Kilpatrick, E. S., & Atkin, S. L. (2013). High-polyphenol chocolate reduces endothelial dysfunction and oxidative stress during acute transient hyperglycaemia in Type 2 diabetes: A pilot randomized controlled trial. *Diabetic Medicine*, 30, 478–483.
- Mi, Y., Zhang, W., Tian, H., Li, R., Huang, S., Li, X., ... Liu, X. (2018). EGCG evokes Nrf2 nuclear translocation and dampens PTP1B expression to ameliorate metabolic misalignment under insulin resistance condition. *Food & Function*, 9(3), 1510–1523.
- Minakawa, M., Miura, Y., & Yagasaki, K. (2012). Piceatannol, a resveratrol derivative, promotes glucose uptake through glucose transporter 4 translocation to plasma membrane in L6 myocytes and suppresses blood glucose levels in type 2 diabetic model db/db mice. *Biochemical and Biophysical Research Communications*, 422, 469–475.
- Miranda Pedroso, T. F. de., Bonamigo, T. R., da Silva, J., Vasconcelos, P., Félix, J. M., Cardoso, C. A. L., ... Tricheza, V. D. K. (2019). Chemical constituents of *Cochlospermum regium* (Schrank) Pilg. root and its antioxidant, antidiabetic, antihypertensive, and anticholinesterase effects in Wistar rats. *Biomedicine & Pharmacotherapy*, 111, 1383–1392.
- Moreno-Indias, I., Sánchez-Alcoholado, L., Pérez-Martínez, P., Andrés-Lacueva, C., Cardona, F., Tinahones, F., & Queipo-Ortuño, M. I. (2016). Red wine polyphenols modulate fecal microbiota and reduce markers of the metabolic syndrome in obese patients. *Food & Function*, 7, 1775–1787.
- Movahed, A., Nabipour, I., Lieben, L. X., Thandapilly, S. J., Yu, L., Kalantarhormozi, M., ... Netticadan, T. (2013). Antihyperglycemic effects of short term resveratrol supplementation in type 2 diabetic patients. *Evidence-Based Complementary and Alternative Medicine: ECAM*, 2013, 851267.
- Mubarak, A., Hodgson, J. M., Considine, M. J., Croft, K. D., & Matthews, V. B. (2013). Supplementation of a high-fat diet with chlorogenic acid is associated with insulin resistance and hepatic lipid accumulation in mice. *Journal of Agricultural and Food Chemistry*, 61, 4371–4378.
- Narita, Y., & Inouye, K. (2009). Kinetic analysis and mechanism on the inhibition of chlorogenic acid and its components against porcine pancreas  $\alpha$ -amylase isozymes I and II. *Journal of Agricultural and Food Chemistry*, 57, 9218–9225.
- Nettleton, J. A., Harnack, L. J., Scrafford, C. G., Mink, P. J., Barraj, L. M., & Jacobs D. R., Jr. (2006). Dietary flavonoids and flavonoid-rich foods are not associated with risk of type 2 diabetes in postmenopausal women. *Journal of Nutrition*, 136, 3039–3045.
- Nie, Q. X., Chen, H., Hu, J., Fan, S., & Nie, S. P. (2019). Dietary compounds and traditional Chinese medicine ameliorate type 2 diabetes by modulating gut microbiota. *Critical Reviews in Food Science and Nutrition*, 59, 848–863.
- Nurul Islam, M., Jung, H. A., Sohn, H. S., Kim, H. M., & Choi, J. S. (2013). Potent  $\alpha$ -glucosidase and protein tyrosine phosphatase 1B inhibitors from *Artemisia capillaris*. *Archives of Pharmacological Research*, 36(5), 542–552.
- Nyambe-Silavwe, H., & Williamson, G. (2018). Chlorogenic and phenolic acids are only very weak inhibitors of human salivary alpha-amylase and rat intestinal maltase activities. *Food Research International*, 113, 452–455.
- Ochiai, R., Sugiura, Y., Shioya, Y., Otsuka, K., Katsuragi, Y., & Hashiguchi, T. (2014). Coffee polyphenols improve peripheral endothelial function after glucose loading in healthy male adults. *Nutrition Research*, 34, 155–159.
- Odle, B., Dennison, N., Al-Nakkash, L., Broderick, T. L., & Plochocki, J. H. (2017). Genistein treatment improves fracture resistance in obese diabetic mice. *BMC Endocrine Disorders*, 17, 1.
- Ogawa, S., Matsumae, T., Kataoka, T., Yazaki, Y., & Yamaguchi, H. (2013). Effect of acacia polyphenol on glucose homeostasis in subjects with impaired glucose tolerance: A randomized multicenter feeding trial. *Experimental and Therapeutic Medicine*, 5, 1566–1572.
- Ogura, K., Ogura, M., Shoji, T., Sato, Y., Tahara, Y., Yamano, G., ... Nagashima, K. (2016). Oral administration of apple procyanidins ameliorates insulin resistance via suppression of pro-inflammatory cytokine expression in liver of diabetic ob/ob mice. *Journal of Agricultural and Food Chemistry*, 64, 8857–8865.
- Oh, J. S., Kim, H., Vijayakumar, A., Kwon, O., Kim, Y., & Chang, N. (2017). Association of dietary flavonoid intake with prevalence of type 2 diabetes mellitus and cardiovascular disease risk factors in Korean women aged  $\geq 30$  years. *Journal of Nutritional Science and Vitaminology*, 63, 51–58.
- Ohnishi, M., Matuo, T., Tsuno, T., Hosoda, A., Nomura, E., Taniguchi, H., ... Morishita, H. (2004). Antioxidant activity and hypoglycemic effect of ferulic acid in STZ-induced diabetic mice and KK-Ay mice. *Biofactors*, 21, 315–319.

- Oza, M. J., & Kulkarni, Y. A. (2018). Biochanin A improves insulin sensitivity and controls hyperglycemia in type 2 diabetes. *Biomedicine & Pharmacotherapy*, 107, 1119–1127.
- Oza, M. J., & Kulkarni, Y. A. (2018). Formononetin treatment in type 2 diabetic rats reduces insulin resistance and hyperglycemia. *Frontiers in Pharmacology*, 9, 739.
- Palsamy, P., & Subramanian, S. (2009). Modulatory effects of resveratrol on attenuating the key enzymes activities of carbohydrate metabolism in streptozotocinnicotinamide-induced diabetic rats. *Chemico-Biological Interactions*, 179, 356–362.
- Palsamy, P., & Subramanian, S. (2010). Ameliorative potential of resveratrol on proinflammatory cytokines, hyperglycemia mediated oxidative stress, and pancreatic beta-cell dysfunction in streptozotocinnicotinamide-induced diabetic rats. *Journal of Cellular Physiology*, 224, 423–432.
- Pari, L., & Satheesh, M. A. (2006). Effect of pterostilbene on hepatic key enzymes of glucose metabolism in streptozotocin- and nicotinamide-induced diabetic rats. *Life Sciences*, 79, 641–645.
- Park, J. H., Bae, J. H., Im, S. S., & Song, D. K. (2014). Green tea and type 2 diabetes. *Integrative Medicine Research*, 3, 4–10.
- Pei, K., Ou, J., Huang, J., & Ou, S. (2016). p-Coumaric acid and its conjugates: Dietary sources, pharmacokinetic properties and biological activities. *Journal of the Science of Food and Agriculture*, 96, 2952–2962.
- Pektaş, M. B., Said, G., Koca, H. B., Yuksel, Y., Vurmaz, A., Koca, T., & Tosun, M. (2016). Resveratrol ameliorates the components of hepatic inflammation and apoptosis in a rat model of Streptozotocin-induced diabetes. *Drug Development Research*, 77, 12–19.
- Penczynski, K. J., Herder, C., Krupp, D., Rienks, J., Egert, S., Wudy, S. A., ... Buyken, A. E. (2019). Flavonoid intake from fruit and vegetables during adolescence is prospectively associated with a favourable risk factor profile for type 2 diabetes in early adulthood. *European Journal of Nutrition*, 58, 1159–1172.
- Pérez-Jiménez, J., Neveu, V., Vos, F., & Scalbert, A. (2010). Identification of the 100 richest dietary sources of polyphenols: An application of the Phenol-Explorer database. *European Journal of Clinical Nutrition*, 64, S112–S120.
- Pinent, M., Cedo, L., Montagut, G., Blay, M., & Ardevol, A. (2012). Procyanidins improve some disrupted glucose homeostatic situations: An analysis of doses and treatments according to different animal models. *Critical Reviews in Food Science and Nutrition*, 52(7), 569–584.
- Pinna, C., Morazzoni, P., & Sala, A. (2017). Proanthocyanidins from *Vitis vinifera* inhibit oxidative stress-induced vascular impairment in pulmonary arteries from diabetic rats. *Phytomedicine*, 25, 39–44.
- Pivari, F., Mingione, A., Brasacchio, C., & Soldati, L. (2019). Curcumin and type 2 diabetes mellitus: Prevention and treatment. *Nutrients*, 11(8), E1837.
- Qin, J., Li, Y., Cai, Z., Li, S., Zhu, J., Zhang, F., ... Peng, Y. (2012). A metagenome-wide association study of gut microbiota in type 2 diabetes. *Nature*, 490(7418), 55.
- Rakvaag, E., & Dragsted, L. O. (2016). Acute effects of light and dark roasted coffee on glucose tolerance: A randomized, controlled crossover trial in healthy volunteers. *European Journal of Nutrition*, 55, 2221–2230.
- Rashid, K., Chowdhury, S., Ghosh, S., & Sil, P. C. (2017). Curcumin attenuates oxidative stress induced NF- $\kappa$ B mediated inflammation and endoplasmic reticulum dependent apoptosis of splenocytes in diabetes. *Biochemical Pharmacology*, 143, 140–155.
- Rašković, A., Čučuz, V., Torović, L., Tomas, A., Gojković-Bukarica, L., Čebović, T., ... Hogervorst, J. C. (2019). Resveratrol supplementation improves metabolic control in rats with induced hyperlipidemia and type 2 diabetes. *Saudi Pharmaceutical Journal*, 27, 1036–1043.
- Reis, C. E. G., Dórea, J. G., & da Costa, T. H. M. (2018). Effects of coffee consumption on glucose metabolism: A systematic review of clinical trials. *Journal of Traditional and Complementary Medicine*, 9(3), 184–191. <https://doi.org/10.1016/j.jtcm.2018.01.001>
- Rivera-Mancía, S., Lozada-García, M. C., & Pedraza-Chaverri, J. (2015). Experimental evidence for curcumin and its analogs for management of diabetes mellitus and its associated complications. *European Journal of Pharmacology*, 756, 30–37.
- Rivière, C., Pawlus, A. D., & Mérillon, J. M. (2012). Natural stilbenoids: Distribution in the plant kingdom and chemotaxonomic interest in Vitaceae. *Natural Product Reports*, 29, 1317–1333.
- Rockwood, S., Mason, D., Lord, R., Lamar, P., Prozialeck, W., & Al-Nakkash, L. (2019). Genistein diet improves body weight, serum glucose and triglyceride levels in both male and female ob/ob mice. *Diabetes, Metabolic Syndrome and Obesity*, 12, 2011–2021.
- Roopchand, D. E., Carmody, R. N., Kuhn, P., Moskal, K., Rojas-Silva, P., Turnbaugh, P. J., & Raskin, I. (2015). Dietary polyphenols promote growth of the gut bacterium *Akkermansia muciniphila* and attenuate high-fat diet-induced metabolic syndrome. *Diabetes*, 64(8), 2847–2858.
- Roy, M., Sen, S., & Chakraborti, A. S. (2008). Action of pelargonidin on hyperglycemia and oxidative damage in diabetic rats: Implication for glycation-induced hemoglobin modification. *Life Sciences*, 82, 1102–1110.
- Sadi, G., Pektaş, M. B., Koca, H. B., Tosun, M., & Koca, T. (2015). Resveratrol improves hepatic insulin signaling and reduces the inflammatory response in streptozotocin-induced diabetes. *Gene*, 570, 213–220.
- Sales, D. S., Carmona, F., de Azevedo, B. C., Taleb-Contini, S. H., Bartolomeu, A. C., Honorato, F. B., ... Pereira, A. M. (2014). *Eugenia punicifolia* (Kunth) DC. as an adjuvant treatment for type-2 diabetes mellitus: A non-controlled, pilot study. *Phytotherapy Research*, 28(12), 1816–1821.
- Sangeetha, R. (2019). Luteolin in the management of type 2 diabetes mellitus. *Current Research in Nutrition and Food Science*, 7, 393–398.
- Santangelo, C., Filesi, C., Vari, R., Scaccocchio, B., Filardi, T., Fogliano, V., ... Masella, R. (2016). Consumption of extra-virgin olive oil rich in phenolic compounds improves metabolic control in patients with type 2 diabetes mellitus: A possible involvement of reduced levels of circulating visfatin. *Journal of Endocrinological Investigation*, 39(11), 1295–1301.
- Satheesh, M. A., & Pari, L. (2006). The antioxidant role of pterostilbene in streptozotocin-nicotinamide-induced type 2 diabetes mellitus in Wistar rats. *Journal of Pharmacy and Pharmacology*, 58, 1483–1490.
- Schafer, A., & Hogger, P. (2007). Oligomeric procyanidins of French maritime pine bark extract (Pycnogenol) effectively inhibit alpha-glucosidase. *Diabetes Research and Clinical Practice*, 77, 41–46.
- Serrano, J., Puupponen-Pimiä, R., Dauer, A., Aura, A.-M., & Saura-Calixto, F. (2009). Tannins: Current knowledge of food sources, intake, bioavailability and biological effects. *Molecular Nutrition & Food Research*, 53(S2), S310–S329.
- Shi, G. J., Li, Y., Cao, Q. H., Wu, H. X., Tang, X. Y., Gao, X. H., ... Yang, Y. (2019). In vitro and in vivo evidence that quercetin protects against diabetes and its complications: A systematic review of the literature. *Biomedicine & Pharmacotherapy*, 109, 1085–1099.
- Shi, M., Loftus, H., McAinch, A. J., & Su, X. Q. (2017). Blueberry as a source of bioactive compounds for the treatment of obesity, type 2 diabetes and chronic inflammation. *Journal of Functional Foods*, 30, 16–29.
- Shimizu, M., Kobayashi, Y., Suzuki, M., Satsu, H., & Miyamoto, Y. (2000). Regulation of intestinal glucose transport by tea catechins. *Biofactors*, 13(1–4), 61–65.
- Solinas, G., & Becattini, B. (2016). JNK at the crossroad of obesity, insulin resistance, and cell stress response. *Molecular Metabolism*, 6, 174–184.
- Son, M. J., Rico, C. W., Nam, S. H., & Kang, M. Y. (2011). Effect of oryzanol and ferulic acid on the glucose metabolism of mice fed with a high-fat diet. *Journal of Food Science*, 76(1), H7–H10.
- Song, Y. Q., Manson, J. E., Buring, J. E., Sesso, H. D., & Liu, S. M. (2005). Associations of dietary flavonoids with risk of type 2 diabetes, and markers of insulin resistance and systemic inflammation in women: A prospective study and cross-sectional analysis. *Journal of the American College of Nutrition*, 24, 376–384.
- Sotnikova, R., Okruhlicova, L., Vlkovicova, J., Navarova, J., Gajdacova, B., Pivackova, L., ... Krenek, P. (2013). Rosmarinic acid administration

- attenuates diabetes-induced vascular dysfunction of the rat aorta. *Journal of Pharmacy and Pharmacology*, 65(5), 713–723.
- Spínola, V., & Castilho, P. C. (2017). Evaluation of Asteraceae herbal extracts in the management of diabetes and obesity. Contribution of caffeoylquinic acids on the inhibition of digestive enzymes activity and formation of advanced glycation end-products (in vitro). *Phytochemistry*, 143, 29–35.
- Sun, H., Liu, X., Long, S. R., Teng, W., Ge, H., Wang, Y., ... Li, W. (2019). Antidiabetic effects of pterostilbene through PI3K/Akt signal pathway in high fat diet and STZ-induced diabetic rats. *European Journal of Pharmacology*, 859, 172526.
- Sun, X., Du, M., Navarre, D. A., & Zhu, M. J. (2018). Purple potato extract promotes intestinal epithelial differentiation and barrier function by activating AMP-activated protein kinase. *Molecular Nutrition & Food Research*, 62, 1700536.
- Takagaki, A., Yoshioka, Y., Yamashita, Y., Nagano, T., Ikeda, M., Hara-Terawaki, A., ... Ashida, H. (2019). Effects of microbial Metabolites of (-)-epigallocatechin gallate on glucose uptake in L6 skeletal muscle cell and glucose tolerance in ICR mice. *Biological & Pharmaceutical Bulletin*, 42(2), 212–221.
- Takikawa, M., Inoue, S., Horio, F., & Tsuda, T. (2010). Dietary anthocyanin-rich bilberry extract ameliorates hyperglycemia and insulin sensitivity via activation of AMP-activated protein kinase in diabetic mice. *Journal of Nutrition*, 140, 527–533.
- Talaei, M., & Pan, A. (2015). Role of phytoestrogens in prevention and management of type 2 diabetes. *World Journal of Diabetes*, 6, 271–283.
- Tan, Z., Zhou, L. J., Mu, P. W., Liu, S. P., Chen, S. J., Fu, X. D., & Wang, T. H. (2012). Caveolin-3 is involved in the protection of resveratrol against high-fat-diet-induced insulin resistance by promoting GLUT4 translocation to the plasma membrane in skeletal muscle of ovariectomized rats. *Journal of Nutritional Biochemistry*, 23, 1716–1724.
- Thazhath, S. S., Wu, T., Bound, M. J., Checklin, H. L., Standfield, S., Jones, K. L., ... Rayner, C. K. (2016). Administration of resveratrol for 5 wk has no effect on glucagon-like peptide 1 secretion, gastric emptying, or glycemic control in type 2 diabetes: A randomized controlled trial. *The American Journal of Clinical Nutrition*, 103(1), 66–70.
- Thielecke, F., & Boschmann, M. (2009). The potential role of green tea catechins in the prevention of the metabolic syndrome—A review. *Hytochemistry*, 70(1), 11–24.
- Timmers, S., de Ligt, M., Phielix, E., van de Weijer, T., Hansen, J., Moonen-Kornips, E., ... Schrauwen, P. (2016). Resveratrol as add-on therapy in subjects with well-controlled type 2 diabetes: A randomized controlled trial. *Diabetes Care*, 39, 2211–2217.
- Tolozza-Zambrano, P., Avello, M., & Fernandez, P. (2015). Determinación de rutina y trigonelina en extractos de hojas de Bauhinia forficata subsp. pruinosa y evaluación del efecto hipoglicemiante en humanos. *Boletín Latinoamericano y del Caribe de Plantas Medicinales y Aromaticas*, 14, 21–32.
- Tresserra-Rimbau, A., Guasch-Ferré, M., Salas-Salvadó, J., Toledo, E., Corella, D., Castañer, O., ... Lamuela-Raventós, R. M. (2016). Intake of total polyphenols and some classes of polyphenols is inversely associated with diabetes in elderly people at high cardiovascular disease risk. *Journal of Nutrition*, 146, 767–777.
- Tsuda, T., Horio, F., & Osawa, T. (1999). Absorption and metabolism of cyanidin 3-O-beta-D-glucoside in rats. *FEBS Letters*, 449, 179–182.
- Tsuneki, H., Ishizuka, M., Terasawa, M., Wu, J. B., Sasaoka, T., & Kimura, I. (2004). Effect of green tea on blood glucose levels and serum proteomic patterns in diabetic (db/db) mice and on glucose metabolism in healthy humans. *BMC Pharmacology [Electronic Resource]*, 4, 18
- Uchida-Maruki, H., Inagaki, H., Ito, R., Kurita, I., Sai, M., & Ito, T. (2015). Piceatannol lowers the blood glucose level in diabetic mice. *Biological & Pharmaceutical Bulletin*, 38, 629–633.
- Ueda, M., Furuyashiki, T., Yamada, K., Aoki, Y., Sakane, I., Fukuda, I., ... Ashida, H. (2010). Tea catechins modulate the glucose transport system in 3T3-L1 adipocytes. *Food & Function*, 1(2), 167–173.
- Ueda, M., Nishiumi, S., Nagayasu, H., Fukuda, I., Yoshida, K., & Ashida, H. (2008). Epigallocatechin gallate promotes GLUT4 translocation in skeletal muscle. *Biochemical and Biophysical Research Communications*, 377(1), 286–290.
- Ueda-Wakagi, M., Hayashibara, K., Nagano, T., Ikeda, M., Yuan, S., Ueda, S., ... Ashida, H. (2018). Epigallocatechin gallate induces GLUT4 translocation in skeletal muscle through both PI3K- and AMPK-dependent pathways. *Food & Function*, 9(8), 4223–4233.
- Ullmann, U., Haller, J., Decourt, J. P., Girault, N., Girault, J., Richard-Caudron, A. S., ... Weber, P. (2003). A single ascending dose study of epigallocatechin gallate in healthy volunteers. *Journal of International Medical Research*, 31(2), 88–101.
- Vaidyanathan, J. B., & Walle, T. (2003). Cellular uptake and efflux of the tea flavonoid (-) epicatechin-3-gallate in the human intestinal cell line caco-2. *Journal of Pharmacology and Experimental Therapeutics*, 307, 745–775.
- Valsecchi, A. E., Franchi, S., Panerai, A. E., Rossi, A., Sacerdote, P., & Colleoni, M. (2011). The soy isoflavone genistein reverses oxidative and inflammatory state, neuropathic pain, neurotrophic and vasculature deficits in diabetes mouse model. *European Journal of Pharmacology*, 650, 694–702.
- van Dam, R. M., Naidoo, N., & Landberg, R. (2013). Dietary flavonoids and the development of type 2 diabetes and cardiovascular diseases: Review of recent findings. *Current Opinion in Lipidology*, 24, 25–33.
- Vazquez-Flores, A. A., Martinez-Gonzalez, A. I., Alvarez-Parrilla, E., Diaz-Sanchez, A. G., de la Rosa, L. A., Gonzalez-Aguilar, G. A., & Aguilar, C. N. (2018). Proanthocyanidins with a low degree of polymerization are good inhibitors of digestive enzymes because of their ability to form specific interactions: A hypothesis. *Journal of Food Science*, 83(12), 2895–2902.
- Vendrame, S., Guglielmetti, S., Riso, P., Arioli, S., Klimis-Zacas, D., & Porrini, M. (2011). Six-week consumption of a wild blueberry powder drink increases bifidobacteria in the human gut. *Journal of Agricultural and Food Chemistry*, 59(24), 12815–12820.
- Wang, Z., Gao, Z., Wang, A., Jia, L., Zhang, X., Fang, M., ... Hu, H. (2019). Comparative oral and intravenous pharmacokinetics of phlorizin in rats having type 2 diabetes and in normal rats based on phase II metabolism. *Food & Function*, 10, 1582–1594.
- Wedick, N. M., Pan, A., Cassidy, A., Rimm, E. B., Sampson, L., Rosner, B., ... Lee, E. J. (2015). Association between flavonoid intake and diabetes risk among the Koreans. *Clinica Chimica Acta*, 439, 225–230.
- Wei, B. B., Chen, Z. X., Liu, M. Y., & Wei, M. J. (2017). Development of a UPLC-MS/MS method for simultaneous determination of six flavonoids in rat plasma after administration of maydis stigma extract and its application to a comparative pharmacokinetic study in normal and diabetic rats. *Molecules*, 22, E1267.
- Weng, L., Zhang, F., Wang, R., Ma, W., & Song, Y. (2019). A review on protective role of genistein against oxidative stress in diabetes and related complications. *Chemico-Biological Interactions*, 310, 108665.
- Wong, R. H., Raederstorff, D., & Howe, P. R. (2016). Acute resveratrol consumption improves neurovascular coupling capacity in adults with type 2 diabetes mellitus. *Nutrients*, 8(7), E425.
- Xiao, J. B. (2017). Dietary flavonoid aglycones and their glycosides: Which show better biological significance? *Critical Reviews in Food Science and Nutrition*, 57, 1874–1905.
- Xiao, J. B., Capanoglu, E., Jassbi, A. R., & Miron, A. (2016). Advance on the flavonoid C-glycosides and health benefits. *Critical Reviews in Food Science and Nutrition*, 56(S1), S29–S45.
- Xiao, J. B., & Högger, P. (2015). Dietary polyphenols and type 2 diabetes: Current insights and future perspectives. *Current Medicinal Chemistry*, 22, 23–38.
- Xiao, J. B., Kai, G. Y., Yamamoto, K., & Chen, X. Q. (2013). Advance in dietary polyphenols as  $\alpha$ -glucosidases inhibitors: A review on structure-activity relationship aspect. *Critical Reviews in Food Science and Nutrition*, 53, 818–836.
- Xiao, J. B., Muzashvili, T. S., & Georgiev, M. I. (2014). Advance on biotechnology for glycosylation of high-value flavonoids. *Biotechnology Advance*, 32, 1145–1156.

- Xiao, J. B., Ni, X. L., Kai, G. Y., & Chen, X. Q. (2013). A review on structure-activity relationship of dietary polyphenols inhibiting  $\alpha$ -amylase. *Critical Reviews in Food Science and Nutrition*, 53, 497–506.
- Xie, M., Chen, G., Wan, P., Dai, Z., Zeng, X., & Sun, Y. (2019). Effects of dicaffeoylquinic acids from *Ilex kudingcha* on lipid metabolism and intestinal microbiota in high-fat-diet-fed mice. *Journal of Agricultural and Food Chemistry*, 67, 171–183.
- Xie, X., Peng, J., Huang, K. P., Huang, J., Shen, X. Y., Liu, P. Q., & Huang, H. Q. (2012). Polydatin ameliorates experimental diabetes-induced fibronectin through inhibiting the activation of NF-kappa B signaling pathway in rat glomerular mesangial cells. *Molecular and Cellular Endocrinology*, 362, 183–193.
- Xie, Y. X., & Chen, X. (2013). Structures required of polyphenols for inhibiting advanced glycation end products formation. *Current Drug Metabolism*, 14, 414–431.
- Xu, H., Barnes, G. T., Yang, Q., Tan, G., Yang, D., Chou, C. J., ... Chen, H. (2003). Chronic inflammation in fat plays a crucial role in the development of obesity-related insulin resistance. *Journal of Clinical Investigation*, 112, 1821–1830.
- Yamaguchi, M., Uchiyama, S., & Lai, Y. L. (2007). Oral administration of phytochemical p-hydroxycinnamic acid has a preventive effect on bone loss in streptozotocin-induced diabetic rats. *International Journal of Molecular Medicine*, 19, 803–807.
- Yamashita, Y., Wang, L., Nanba, F., Ito, C., Toda, T., & Ashida, H. (2016). Procyanidin promotes translocation of glucose transporter 4 in muscle of mice through activation of insulin and AMPK signaling pathways. *PLoS ONE*, 11, e0161704.
- Yan, F. J., & Zheng, X. D. (2017). Anthocyanin-rich mulberry fruit improves insulin resistance and protects hepatocytes against oxidative stress during hyperglycemia by regulating AMPK/ACC/mTOR pathway. *Journal of Functional Foods*, 30, 270–281.
- Yan, F., Sun, X., & Xu, C. (2018). Protective effects of resveratrol improve cardiovascular function in rats with diabetes. *Experimental and Therapeutic Medicine*, 15(2), 1728–1734.
- Yan, X., Yang, C., Lin, G., Chen, Y., Miao, S., Liu, B., & Zhao, C. (2019). Antidiabetic potential of green seaweed *Enteromorpha prolifera* flavonoids regulating insulin signaling pathway and gut microbiota in type 2 diabetic mice. *Journal of Food Science*, 84(1), 165–173.
- Yang, K., & Chan, C. B. (2017). Proposed mechanisms of the effects of proanthocyanidins on glucose homeostasis. *Nutrition Reviews*, 75, 642–657.
- Yao, Z., Gu, Y., Zhang, Q., Liu, L., Meng, G., Wu, H., ... Niu, K. (2019). Estimated daily quercetin intake and association with the prevalence of type 2 diabetes mellitus in Chinese adults. *European Journal of Nutrition*, 58(2), 819–830.
- Ye, Y. B., Chen, A. L., Lu, W., Zhuo, S. Y., Liu, J., Guan, J. H., ... Chen, Y. M. (2015). Daidzein and genistein fail to improve glycemic control and insulin sensitivity in Chinese women with impaired glucose regulation: A double-blind, randomized, placebo-controlled trial. *Molecular Nutrition & Food Research*, 59(2), 240–249.
- Yin, J., Xing, H., & Ye, J. (2008). Efficacy of berberine in patients with type 2 diabetes mellitus. *Metabolism: Clinical and Experimental*, 57(5), 712–717.
- Yu, L. M., Li, Z., Dong, X., Xue, X. D., Liu, Y., Xu, S., ... Wang, H. S. (2018). Polydatin protects diabetic heart against ischemia-reperfusion injury via Notch1/Hes1-mediated activation of Pten/Akt signaling. *Oxidative Medicine and Cellular Longevity*, 2018, 2750695.
- Zabad, O. M., Samra, Y. A., & Eissa, L. A. (2019). p-Coumaric acid alleviates experimental diabetic nephropathy through modulation of Toll like receptor-4 in rats. *Life Sciences*, 2019, 238, 116965.
- Zentek, J., Gärtner, S., Tedin, L., Männer, K., Mader, A., & Vahjen, W. (2013). Fenugreek seed affects intestinal microbiota and immunological variables in piglets after weaning. *British Journal of Nutrition*, 109, 859–866.
- Zha, W., Bai, Y., Xu, L., Liu, Y., Yang, Z., Gao, H., & Li, J. (2018). Curcumin attenuates testicular injury in rats with streptozotocin-induced diabetes. *BioMed Research International*, 2018, 7468019.
- Zhang, D. W., Fu, M., Gao, S. H., & Liu, J. L. (2013). Curcumin and diabetes: A systematic review. *Evidence-Based Complementary and Alternative Medicine*, 2013, 636053.
- Zhang, H. J., Ji, B. P., Chen, G., Zhou, F., Luo, Y. C., Yu, H. Q., ... Li, H. Y. (2007). A combination of grape seed-derived procyanidins and gypenosides alleviates insulin resistance in mice and HepG2 cells. *Journal of Food Science*, 74, H1–H7.
- Zhang, J., & Kashket, S. (1998). Inhibition of salivary amylase by black and green teas and their effects on the intraoral hydrolysis of starch. *Caries Research*, 32(3), 233–238.
- Zhang, J., Sasaki, T., Li, W., Nagata, K., Higai, K., Feng, F., ... Koike, K. (2018). Identification of caffeoylquinic acid derivatives as natural protein tyrosine phosphatase 1B inhibitors from *Artemisia princeps*. *Bioorganic & Medicinal Chemistry Letters*, 28(7), 1194–1197. <https://doi.org/10.1016/j.bmcl.2018.02.052>.
- Zhang, M., Wang, S., Cheng, Z., Xiong, Z., Lv, J., Yang, Z., ... Fan, Y. (2017). Polydatin ameliorates diabetic cardiomyopathy via Sirt3 activation. *Biochemical and Biophysical Research Communications*, 493(3), 1280–1287.
- Zhang, X. J., Liu, S., Xing, J. P., Liu, Z. Q., & Song, F. R. (2018). Effect of type 2 diabetes mellitus on flavonoid pharmacokinetics and tissue distribution after oral administration of Radix Scutellaria extract in rats. *Chinese Journal of Natural Medicines*, 16, 418–427.
- Zhao, C., Yang, C. F., Wai, S. T. C., Zhang, Y. B., Portillo, M. P., Paoli, P., ... Cao, H. (2019). Regulation of glucose metabolism by bioactive phytochemicals for the management of type 2 diabetes mellitus. *Critical Reviews in Food Science and Nutrition*, 59(6), 830–847.
- Zhao, C., Yang, C., Chen, M., Lv, X., Liu, B., Yi, L., ... Xiao, J. (2018). Regulatory efficacy of brown seaweed *Lessonia nigrescens* extract on the gene expression profile and intestinal microflora in type 2 diabetic mice. *Molecular Nutrition & Food Research*, 62(4), 1700730.
- Zhao, X., Chen, Z., Yin, Y., & Li, X. (2017). Effects of polysaccharide from *Physalis alkekengi* var. *francheti* on liver injury and intestinal microflora in type-2 diabetic mice. *Pharmaceutical Biology*, 55(1), 2020–2025.
- Zhao, X., Tao, J., Zhang, T., Jiang, S., Wei, W., Han, H., ... Yue, H. (2019). Resveratrolside alleviates postprandial hyperglycemia in diabetic mice by competitively inhibiting  $\alpha$ -glucosidase. *Journal of Agricultural and Food Chemistry*, 67, 2886–2893.
- Zhong, L., Furne, J. K., & Levitt, M. D. (2006). An extract of black, green, and mulberry teas causes malabsorption of carbohydrate but not of triacylglycerol in healthy volunteers. *American Journal of Clinical Nutrition*, 84, 551–555.
- Zhou, J., Chan, L., & Zhou, S. (2012). Trigonelline: A plant alkaloid with therapeutic potential for diabetes and central nervous system disease. *Current Medicinal Chemistry*, 19, 3523–3531.
- Zhu, W., Jia, Q. J., Wang, Y., Zhang, Y. H., & Xia, M. (2012). The anthocyanin cyanidin-3-O-beta-glucoside, a flavonoid, increases hepatic glutathione synthesis and protects hepatocytes against reactive oxygen species during hyperglycemia: Involvement of a cAMP-PKA-dependent signaling pathway. *Free Radical Biology and Medicine*, 52, 314–327.
- Zibadi, S., Rohdewald, P. J., Park, D., & Watson, R. R. (2008). Reduction of cardiovascular risk factors in subjects with type 2 diabetes by Pycnogenol supplementation. *Nutrition Research*, 28, 315–320.
- Zohreh, M., Seyede, M. A., Mohammad, H. D., & Abbas, R. (2014). The effect of quercetin supplementation on oxidative stress, glycemic control, lipid profile and insulin resistance in type 2 diabetes: A randomized clinical trial. *Journal of Health Sciences & Surveillance System*, 2(1), 8–14.

**How to cite this article:** Sun C, Zhao C, Guven EC, et al. Dietary polyphenols as antidiabetic agents: Advances and opportunities. *Food Frontiers*. 2020;1:18–44. <https://doi.org/10.1002/fft2.15>